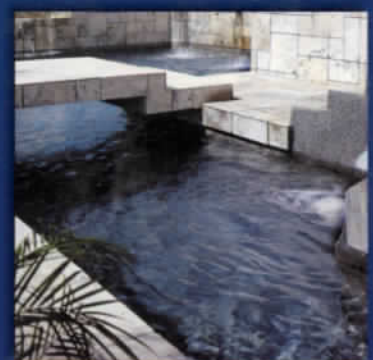


72 **ipt** **POOL TILE™**
and **STONE**

**Bringing Backyard
Products To The Front
Of The Line**



LittleTileInc.com

Directory

• 1"x1", 2"x2" Unglazed (UN)page 44	• La Granito (LG)page 43
• 2"x 2" Tiles (BX, HM)page 44	• Ledger Stone (STLSF)page 48
• 6"x 6" Solids (K, M)page 47	• Marine Field (M)page 16
• Akron Field (KAK)page 42	• Martinique (MAR)page 14
• Angel Fish (YAF)page 45	• Mediterranean (MDT)page 19
• Atlantic Shell (AT)page 45	• Mini Koyn (MK / TK)page 31
• Avalon (AVA)page 7	• Moonbeam (ME, STB)page 30
• Aztec (AZ)page 2	• Mosaicspage 52
• Borrego (BG, BX, BGF)page 37	• Nebula (GLTN)page 15
• Botanical (BUE)page 41	• New Tulip (M)page 46
• Brickspage 49	• Portofino (PTF)page 10
• California Dolphin (CD)page 23	• Powerstone / Imola (MC)page 26
• Catania (CAT)page 35	• Quartzite Coping/Decking (STXL)page 51
• Carrera (CAR)page 39	• Raku (RU)page 29
• Dakota (DK)page 11	• Riptide (RT)page 40
• Del Mar (DM)page 43	• Rockscapes (RK)page 18
• Desert Rose (RX)page 34	• Rockscapes Dolphin (RKD)page 18
• Discovery (DS)page 21	• Rope (M)page 46
• Discovery Accent (DAS)page 22	• Sea Bluff (MBL)page 41
• Discovery Field (DSF)page 20	• Seven Seas (PA, SS)page 9
• Durango Stonepage 50	• Shabui / Imola (RX)page 27
• Europe (EU)page 36	• Sierra Mountain (SMS)page 13
• Ferrara / Imola (FRP)page 12	• Star Mist (STM)page 25
• Florida (LC)page 43	• Stargazer (ST)page 1
• Graniti (GRI)page 38	• Tibet (TB)page 28
• Harmony (HS)page 24	• Tranquility (TO)page 9
• Hibiscus (HI)page 17	• Tropical (TRH, TRN, TRH)page 8
• Himalaya (HLMULTI)page 5	• Tuscany (HBLU, HVER)page 3
• Inca (INC)page 33	• Venus (GLTV)page 15
• India Imola (RX)page 32	• Verona (VR)page 4
• Island Breeze (IB, IBF)page 6	• Yucatan (YU)page 10
• Kaleidoscope (KL)page 42		

Stargazer

6" x 6"

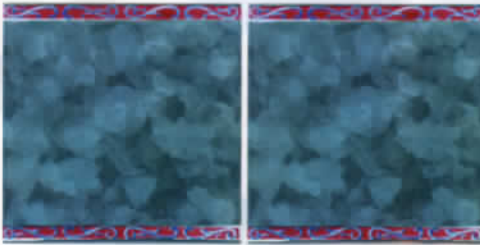
4 pcs. = 1 sq. ft. nominal



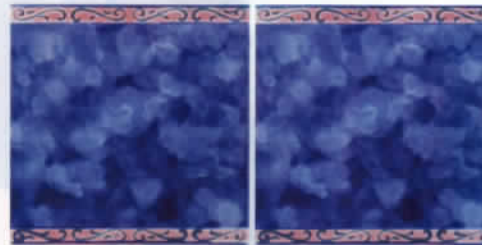
ST75
Marine Pattern
(not sold separately - includes both patterns)



ST95 (shown enlarged)
Caribbean Blue Pattern
(not sold separately - includes both patterns)



STF675
Marine Field



STF695
Caribbean Blue Field

Tiles shown in photo
at right are
Stargazer ST95
Caribbean Blue Pattern
and STF695
Caribbean Blue Field



To see how any of our tiles look installed, dive into our web site: www.nptgonline.com

Note: The shade of tiles or stone may vary within any given color - an inherent quality that enhances their beauty. Visually check the actual shade before installation.



Tile shown
in photo at right
is Aztec
AZ606 Cobalt



Aztec

6" x 6", Deco, 2" x 2"

6" x 6": 4 pcs. = 1.0 sq. ft. nominal
2" x 2": 1 sht. = 1.0 sq. ft.

Tip: the Aztec tile is available in a 3" x 12" bullnose tile.



AZ601
Peacock
(wide shade variations)

AZ603
Barley
(wide shade variations)



AZ606
Cobalt
(wide shade variations)



AZ608
Ash Nero
(wide shade variations)



AZ1 Deco
Peacock
(sold by 6" x 6" piece,
wide shade variations)



AZ3 Deco
Barley
(sold by 6" x 6" piece,
wide shade variations)



AZ6 Deco
Cobalt
(sold by 6" x 6" piece,
wide shade variations)



AZ8 Deco
Ash Nero
(sold by 6" x 6" piece,
wide shade variations)



AZ201
Peacock
(wide shade variations)



AZ203 (shown enlarged)
Barley
(wide shade variations)



AZ206
Cobalt
(wide shade variations)



AZ208
Ash Nero
(wide shade variations)

Tuscany

6" x 6", Deco, 2" x 2"

6" x 6": 4 pcs. = 1.0 sq. ft. nominal

2" x 2": 1 sht. = 1.0 sq. ft.



HBLU (C30)
Pietra Azul
(wide shade variations)



HVER (C70)
Pietra Verde
(wide shade variations)



HBLU Deco (shown enlarged)
Pietra Azul
Decos sold in sets of 4
(wide shade variations)



HVER Deco
Pietra Verde
Decos sold in sets of 4
(wide shade variations)



HBLU22
Pietra Azul 2" x 2"
(wide shade variations)



HVER22
Pietra Verde 2" x 2"
(wide shade variations)

Tip: the Tuscany tile is available in a 3" x 12" bullnose tile.



Tile shown in photo at right is Tuscany HVER (C70) Pietra Verde

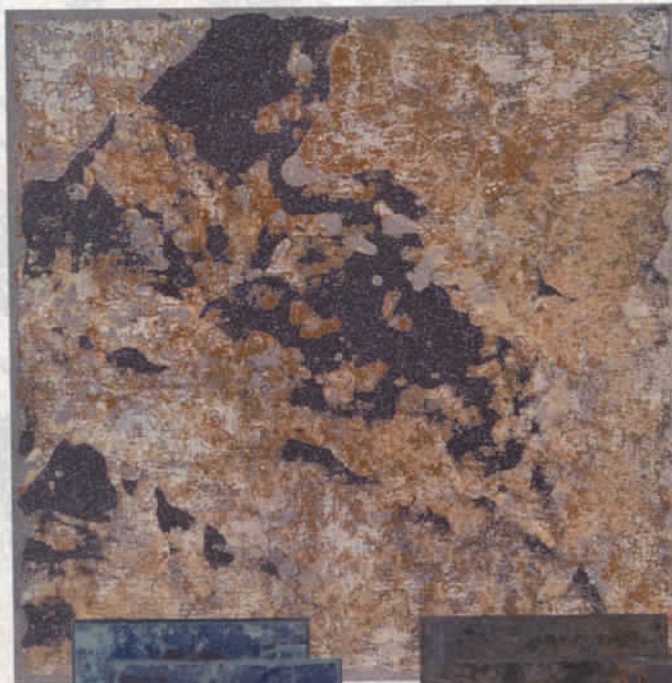


To see how any of our tiles look installed, dive into our web site: www.nptgonline.com

Note: The shade of tiles or stone may vary within any given color – an inherent quality that enhances their beauty. Visually check the actual shade before installation.



Tile shown in photo at left is VR679 Borba Turquoise



Verona

6" x 6"

4 pcs. = 1.0 sq. ft. nominal

Tip: the Verona tile is available

in 3" x 12" bullnose tile to give a rounded, finished appearance.



VR679
Borba Turquoise



VR680
Boticas Green



VR681
Tondela Blue



VR682 (shown enlarged)
Tavora Tan

Himalaya

Decking, 2" x 2", 6" x 6"
4 pcs. = 1.0 sq. ft. nominal

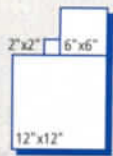
Tip: the Himalaya tile is available in 3" x 12" bullnose tile to give a rounded, finished appearance. Note: this tile has an extreme inherent color variation.



HLMULTI2x2
Himalaya Multicolor 2" x 2"



HLMULTI
Himalaya Multicolor 6" x 6"



Ask about other sizes and schematics!

Tile shown in photo at right is HLMULTI Himalaya Multicolor



To see how any of our tiles look installed, dive into our web site: www.nptgonline.com

Note: The shade of tiles or stone may vary within any given color - an inherent quality that enhances their beauty. Visually check the actual shade before installation.





Tiles shown in photo at left are Island Breeze IBF32 Electric Blue and IB32 Electric Blue

Tip: the Island Breeze tiles are available in four types of trim to give you a rounded, finished appearance.



Quarter Round Tiles



Bullnose Tiles



Island Breeze

3" x 3", Deco

IB = 1.08 sq. ft.
IBF = 1.08 sq. ft.



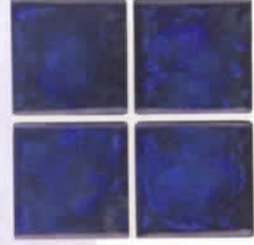
IBF29 Caribbean Blue



IBF32 Electric Blue



IBF90 Marine Green



IBF95 Royal Blue



IB29 Caribbean Blue



IB32 Electric Blue



IB90 (shown enlarged) Marine Green



IB95 Royal Blue

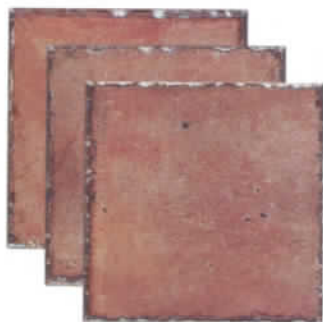


Tiles shown in photo above are AVAGREEN KOAV08 and AVAGREEN Deco KIAV08

Avalon

6" x 6", Deco, 2" x 2"

6" x 6": 4 pcs. = 1.0 sq. ft. nominal
2" x 2": 1 sht. = 1.0 sq. ft.



AVARUST
KOAV01
(wide shade variations)



AVABLUE
KOAV06
(wide shade variations)



AVATAN
KOAV07
(wide shade variations)



AVAGREEN
KOAV08
(wide shade variations)



AVARUST Deco
KIAV01 (sold by 6" x 6"
piece, wide shade variations)



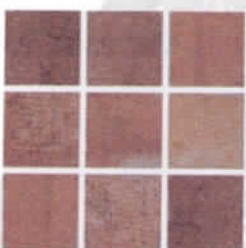
AVABLUE Deco (shown enlarged)
KIAV06 (sold by 6" x 6"
piece, wide shade variations)



AVATAN Deco
KIAV07 (sold by 6" x 6"
piece, wide shade variations)



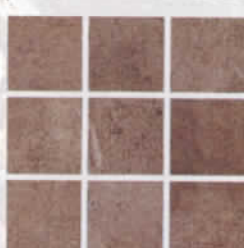
AVAGREEN Deco
KIAV08 (sold by 6" x 6"
piece, wide shade variations)



AVARUST 2x2
(wide shade variations)



AVABLUE 2x2
(wide shade variations)



AVATAN 2x2
(wide shade variations)



AVAGREEN 2x2
(wide shade variations)

Tip: the spectacular Avalon tile has a natural stone surface texture with exciting, metallic silver highlights that create a brilliant energy.



Tip: when installing Avalon tile on surfaces that meet at outside right angles, you can use a 3" x 12" bullnose tile to give a rounded, finished appearance.



To see how any of our tiles look installed, dive into our web site: www.nptgonline.com
Note: The shade of tiles or stone may vary within any given color – an inherent quality that enhances their beauty. Visually check the actual shade before installation.



Tiles shown in photo at left are Tropical TRN632 Electric Blue Nautilus and TRF632 Electric Blue Field



Tropical

6"x6"

4 pcs. = 1.0 sq. ft. nominal



TRH632
Electric Blue Hibiscus



TRN632
Electric Blue Nautilus



TRF632
Electric Blue Field



TRH691
Teal Green Hibiscus



TRN691 (shown enlarged)
Teal Green Nautilus



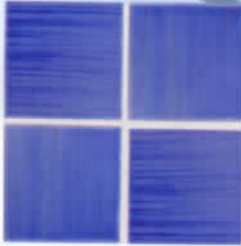
TRF691
Teal Green Field

Tile shown in photo below is Tranquility TQ312 Brushed Sky Blue

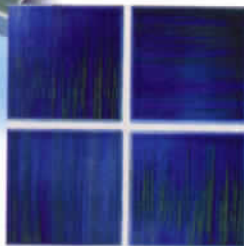
Tranquility

3" x 3"

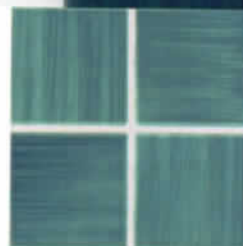
1 sht. = 1.06 sq. ft.



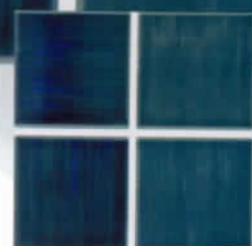
TQ312
Brushed Sky Blue



TQ332
Brushed Electric



TQ375
Brushed Marine



TQ395 (shown enlarged)
Brushed Blue/Marine

Tiles shown in photo above are Tranquility TQ395 Brushed Blue/Marine with Mini Koyn MK / TK255 Caribbean Blue

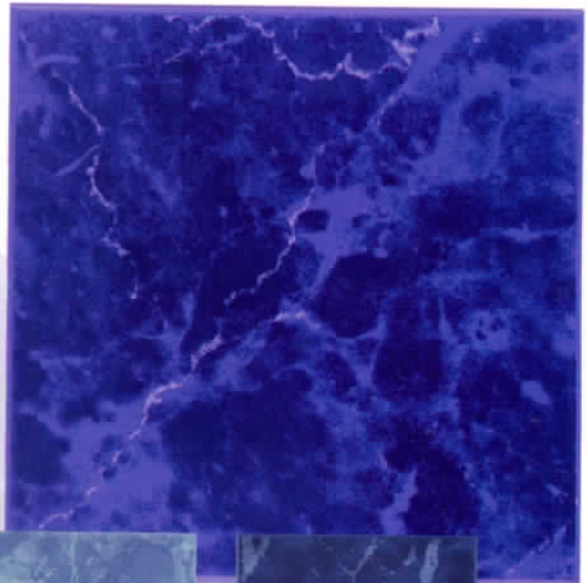


Tip: the Seven Seas tile is available in a 3" x 12" bullnose.

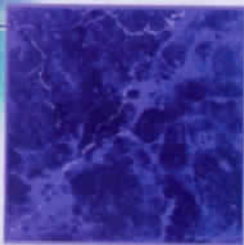
Seven Seas

6" x 6"

4 pcs. = 1.0 sq. ft. nominal



Tile shown in photo above is Seven Seas PA32 Mediterranean Blue



PA32 (shown enlarged)
Mediterranean Blue



PA41
Lake Blue



PA95
Pacific Blue

To see how any of our tiles look installed, dive into our web site: www.nptgonline.com

Note: The shade of tiles or stone may vary within any given color – an inherent quality that enhances their beauty. Visually check the actual shade before installation.





Yucatan

6" x 6", Deco

4 pcs. = 1.0 sq. ft. nominal



Tip: the Yucatan

tile is available in 3" x 12" bullnose tile to give a rounded, finished appearance.



YUARANCIO Arancio
(wide shade variations)



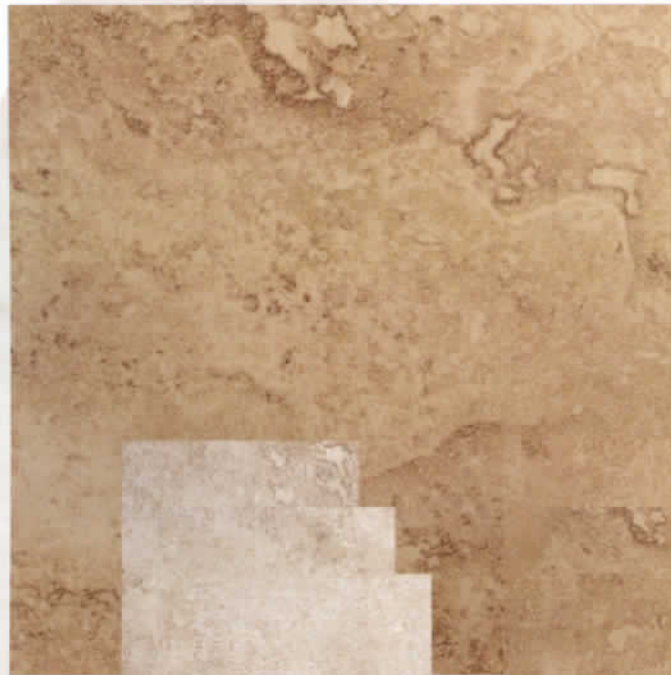
YUBLU (shown enlarged) Blue
(wide shade variations)



YUARANCIO Deco Arancio
(wide shade variations)



YUBLU Deco Blue
(wide shade variations)



Portofino

6" x 6"

4 pcs. = 1.0 sq. ft. nominal



Tip: the Portofino

tile is available in 3" x 12" bullnose tile to give a rounded, finished appearance.



PTF40 Sabbia

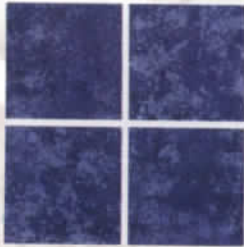


PTF60 Noce

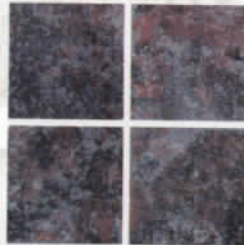
Dakota

3" x 3"

DK: 1 sht. = 1.05 sq. ft.



DK350
Blueberry



DK354
Rustic Brick



DK355 (shown enlarged)
Wheat



DK356
Rushmore Blue



Bullnose Tiles

Tip: the **Dakota** tiles are available with surface bullnose and down angle trims to give you a rounded, finished appearance.

Tile shown in photo at right is Dakota DK354 Rustic Brick



To see how any of our tiles look installed, dive into our web site: www.nptgonline.com

Note: The shade of tiles or stone may vary within any given color - an inherent quality that enhances their beauty. Visually check the actual shade before installation.



Tiles shown in photo at left are Ferrara FRP-BONE Bone and FRP-GOLD IMOLA Gold



Tip: the Ferrara tile is available in a 3" x 12" bullnose.

Ferrara and matching Imola

6" x 6", Imola
4 pcs. = 1.0 sq. ft. nominal



FRP-BLUE Blue

FRP-BONE Bone

FRP-GOLD Gold



FRP-BLUE Imola Blue
(sold by 6" x 6" piece)



FRP-BONE Imola Bone
(sold by 6" x 6" piece)



FRP-GOLD Imola Gold
(sold by 6" x 6" piece)

FRP-JADE Jade

FRP-OCEAN (shown enlarged) Blue

F-STORM Gray

FRP-GREEN Green



FRP-JADE Imola Jade
(sold by 6" x 6" piece)



FRP-OCEAN Imola Ocean
(sold by 6" x 6" piece)



FRP-STORM Imola Storm
(sold by 6" x 6" piece)



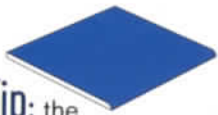
Sierra Mountain

3" x 3", 6" x 6"

3" x 3": 1 sht. = 1.0 sq. ft.
6" x 6": 4 pcs. = 1.0 sq. ft. nominal



Tiles shown in photos are
Sierra Mountain SMS Azul
and SMS Azul Deco (top),
and SMS3GI Giada (bottom)



Tip: the Sierra Mountain

tile is available in a
6" x 6" and 3" x 3"
bullnose tile.



SMS Azul



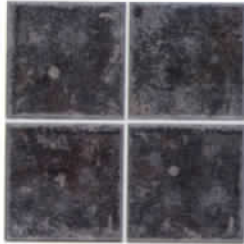
SMS Cobalto



SMS Giada



SMS Grafite



SMS3AZ
Azul



SMS3CO
Cobalto



SMS3GI
Giada



SMS3GR
Grafite



SMS Azul Deco
(sold by 6" x 6" piece)



SMS Cobalto Deco
(sold by 6" x 6" piece)



SMS Giada Deco
(shown enlarged
sold by 6" x 6" piece)



SMS Grafite Deco
(sold by 6" x 6" piece)

To see how any of our tiles look installed, dive into our web site: www.nptgonline.com

Note: The shade of tiles or stone may vary within any given color – an inherent quality that enhances their beauty. Visually check the actual shade before installation.





Tiles shown in photo at left is
 Martinique MAR95
 Caribbean Blue



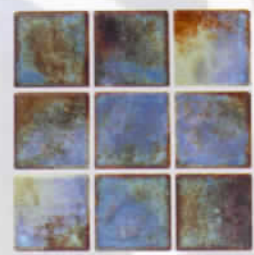
Martinique

2" x 2", Border

MAR: 1 sht. = 1.06 sq. ft.
 MARF: 1 sht. = 1.06 sq. ft.

MAR33
 Ocean Blue

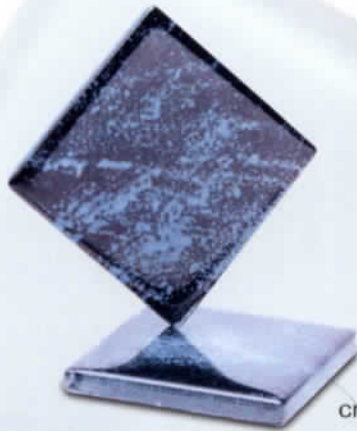
MAR95
 Caribbean Blue



MARF233
 Ocean Blue 2" x 2"



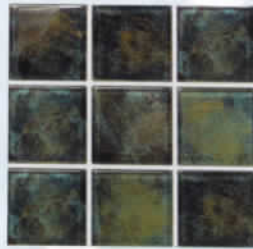
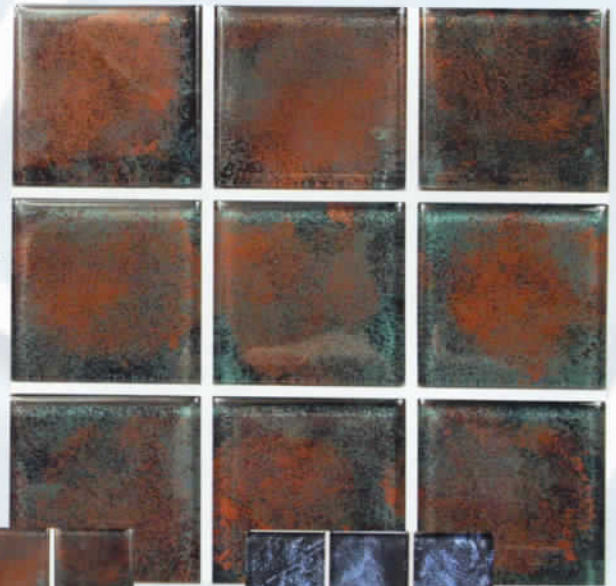
MARF295
 Caribbean Blue 2" x 2"



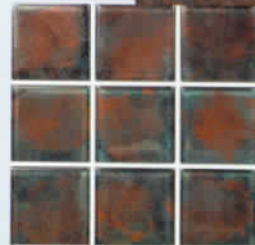
Nebula

1 sht. = 1.0 sq. ft.

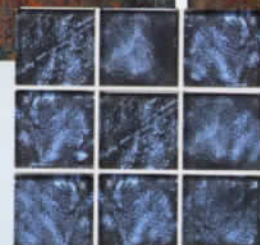
Note: **Nebula** tiles are beautifully crafted, translucent glass tiles.



GLTN0069
Green



GLTN0071 (shown enlarged)
Rust



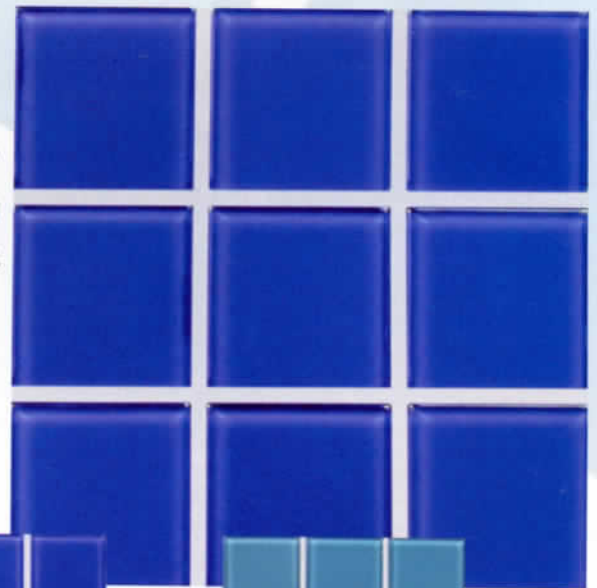
GLTN0074
Blue



Venus

1 sht. = 1.0 sq. ft.

Note: **Venus** tiles are beautifully crafted, translucent glass tiles.



GLTV032
Electric



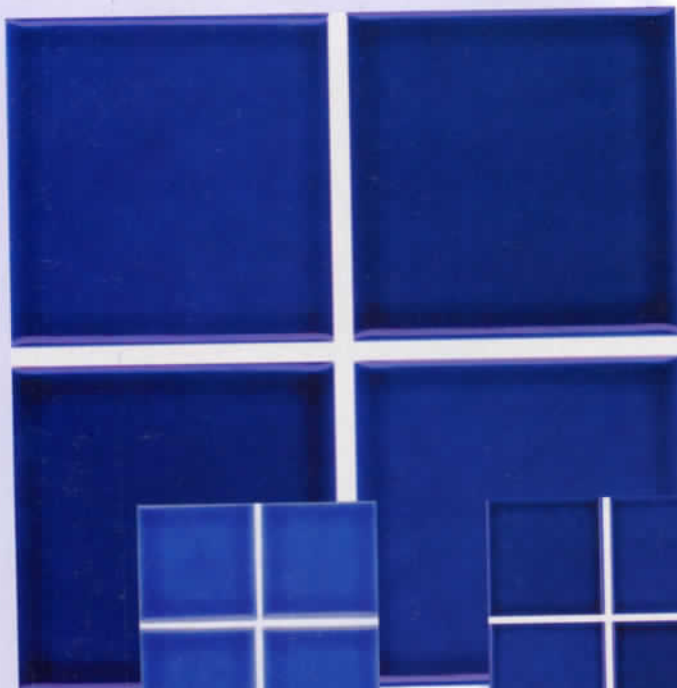
GLTV066
Turquoise





Tile shown in photo at left is Marine Field M391 Ocean Blue

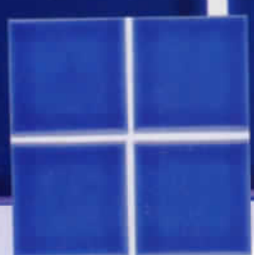
Tip: when installing Marine Field tiles on surfaces that meet at outside right angles, you can select from four types of trim to give you a rounded, finished appearance.



Marine Field

3" x 3"

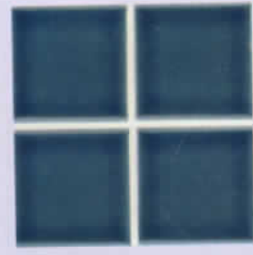
1 sht. = 1.0 sq. ft.



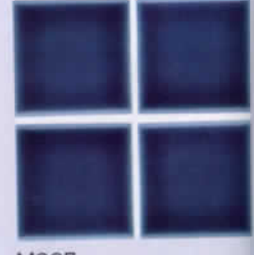
M332
Diamond Blue



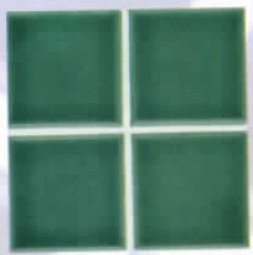
M350 (shown enlarged)
Cobalt Blue



M391
Ocean Blue



M397
Sapphire Blue



M399
Emerald Green

Hibiscus

1 sht. = 1.0 sq. ft.



HI620 (shown enlarged)
Electric Blue



HI630
Teal



HI634
Emerald Green

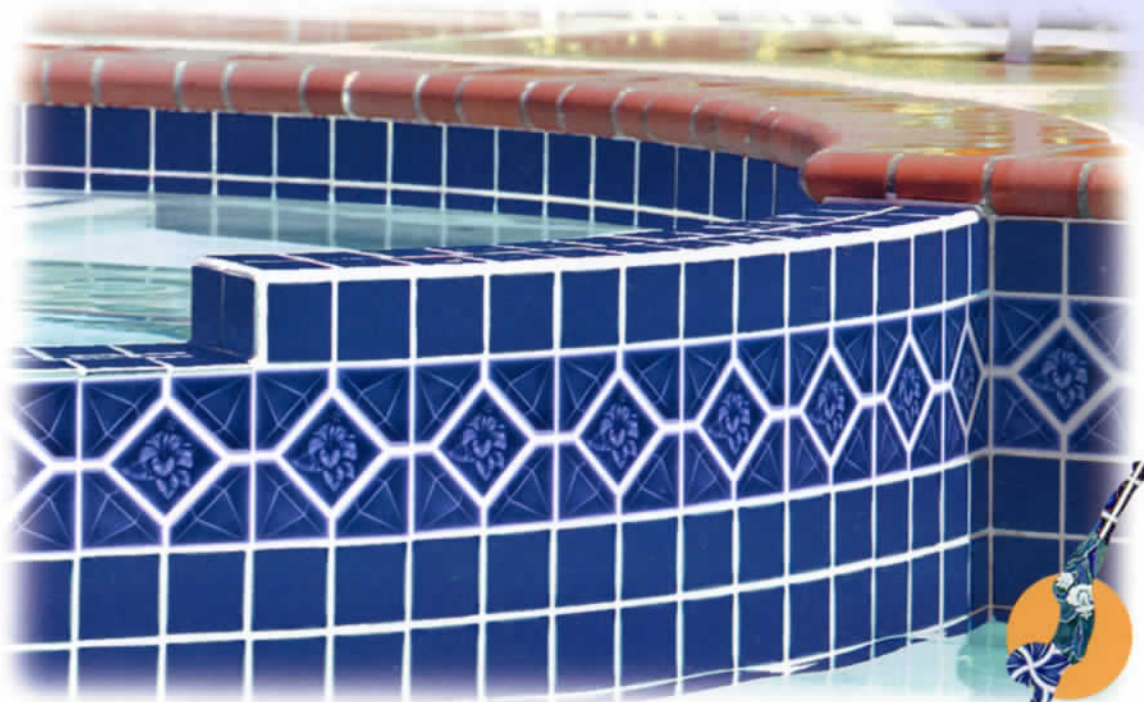


HI645
Navy

Mix & Match

The **Hibiscus** and **Marine Field** tiles are color coordinated. They have been designed for what is known as "Mix & Match." This allows you to create any number of striking variations in your tile design, while maintaining a harmonious color scheme. There's no limit to your imagination and personal expression with this select series of fully coordinated "Mix & Match" tiles.

Tiles shown in photo at right are Hibiscus HI645 Navy with Marine Field M397 Sapphire Blue



To see how any of our tiles look installed, dive into our web site: www.nptgonline.com

Note: The shade of tiles or stone may vary within any given color – an inherent quality that enhances their beauty. Visually check the actual shade before installation.





Bullnose Tiles



Quarter Round Tiles

Tip: when installing **Rockscapes** tiles on surfaces that meet at outside right angles, you can select from four types of trim to give you a rounded, finished appearance.



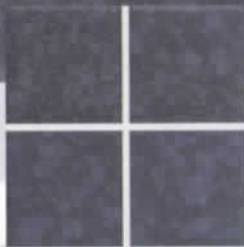
Rockscapes & Rockscapes Dolphin

1" x 1", 3" x 3"

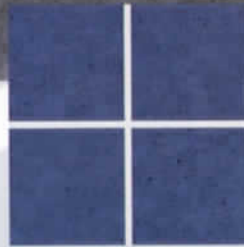
1" x 1": 1 sht. = 1.1 sq. ft.

3" x 3": 1 sht. = 1.0 sq. ft.

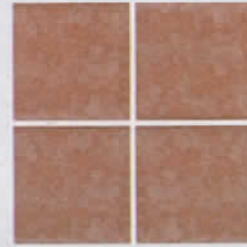
Deco: 1 sht. = 1.0 sq. ft.



RK338
Slate



RK348
Niagra



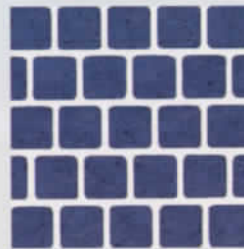
RK352
Copper



RK360
Bone



RK138
Slate



RK148
Niagra



RK152 (shown enlarged)
Copper



RK160
Bone



RKD338 (shown enlarged)
Slate



RKD348
Niagra



RKD352
Copper

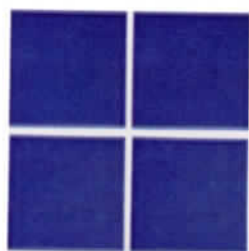
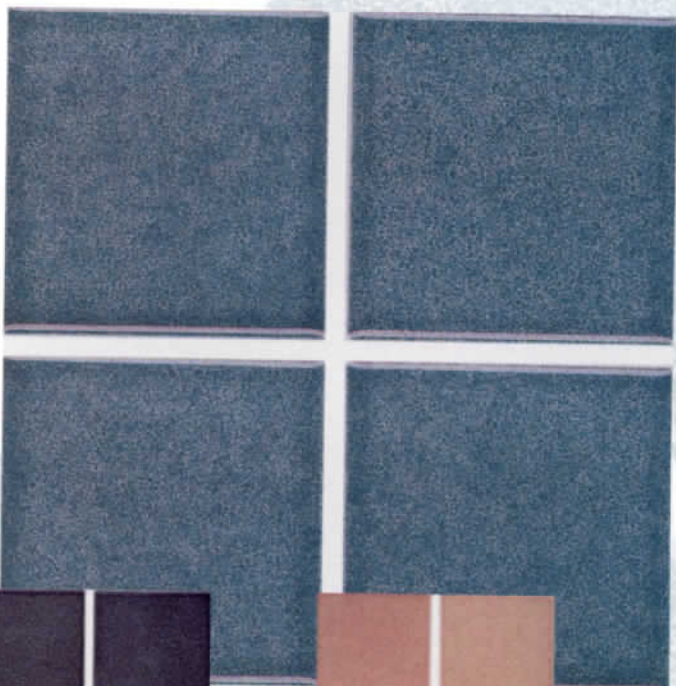


RKD360
Bone

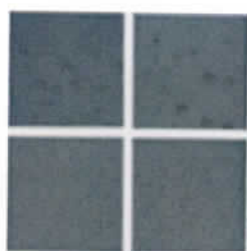
Mediterranean

3" x 3"

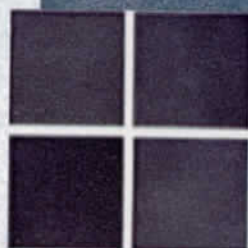
1 sht. = 1.0 sq. ft.



MDT100
Tahoe Blue



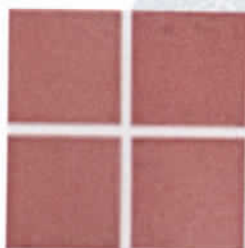
MDT120
Lagoon Green



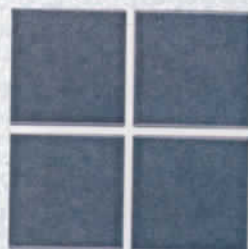
MDT130
Coral Black



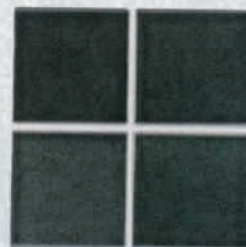
MDT140
Sandy Beige



MDT150
Sedona



MDT175 (shown enlarged)
Calypso



MDT180
Jade

Tip: when installing Mediterranean tiles on surfaces that meet at outside right angles, you can select from four types of trim to



Quarter Round
Tiles

give you a rounded, finished



Bullnose Tiles

Tile shown in photo at right is Mediterranean MDT130 Coral Black



To see how any of our tiles look installed, dive into our web site: www.nptgonline.com

Note: The shade of tiles or stone may vary within any given color – an inherent quality that enhances their beauty. Visually check the actual shade before installation.





Tile shown in photo at left is Discovery Field DSF75 Marine

Tip: the Discovery Field tiles are available in four types of trim to give you a rounded, finished appearance.



Quarter Round Tiles

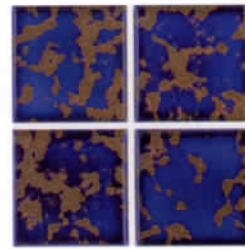
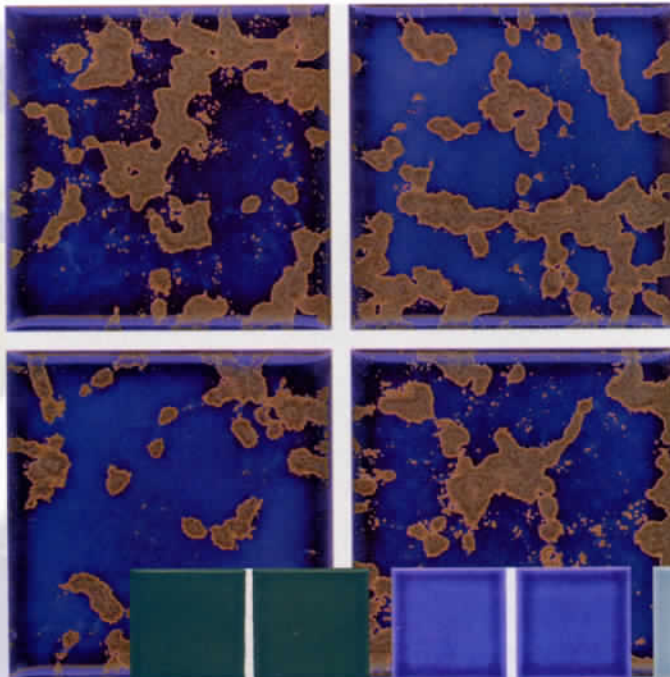


Bullnose Tiles

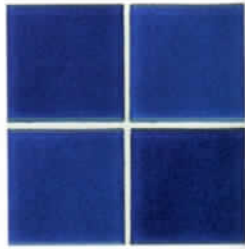
Discovery Field

3" x 3"

1 sht. = 1.05 sq. ft.



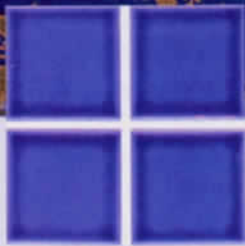
DSF10 (shown enlarged) Terra Blue



DSF20 Blue



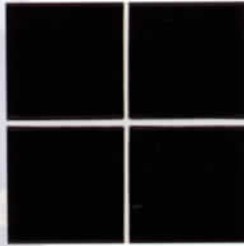
DSF22 Hunter Green



DSF32 Electric Blue



DSF33 Teal Blue



DSF39 Black



DSF50 Cobalt Blue



DSF75 Marine



DSF85 French Gray



DSF90 Marine Green



DSF91 Teal Green



DSF95 Caribbean Blue

Discovery

1 sht. = 1.05 sq. ft.



DS200 (shown enlarged)
Blue



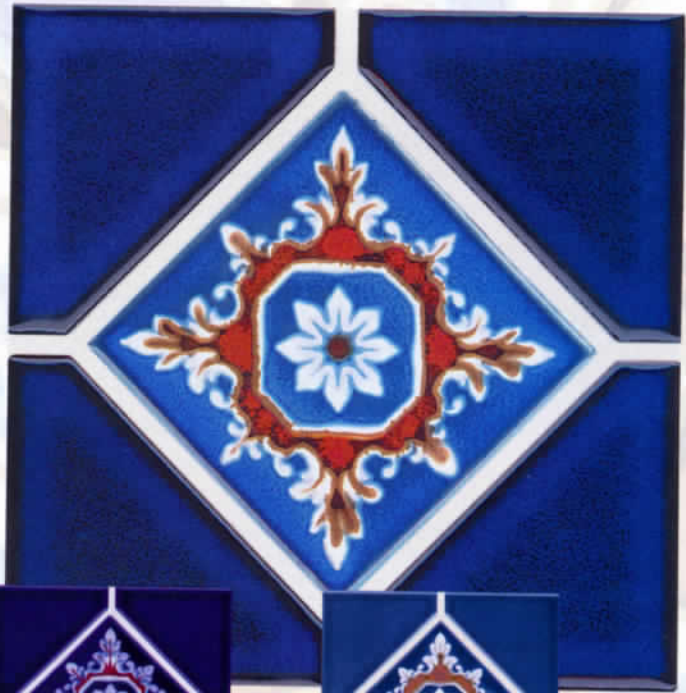
DS320
Electric Blue



DS500
Cobalt Blue



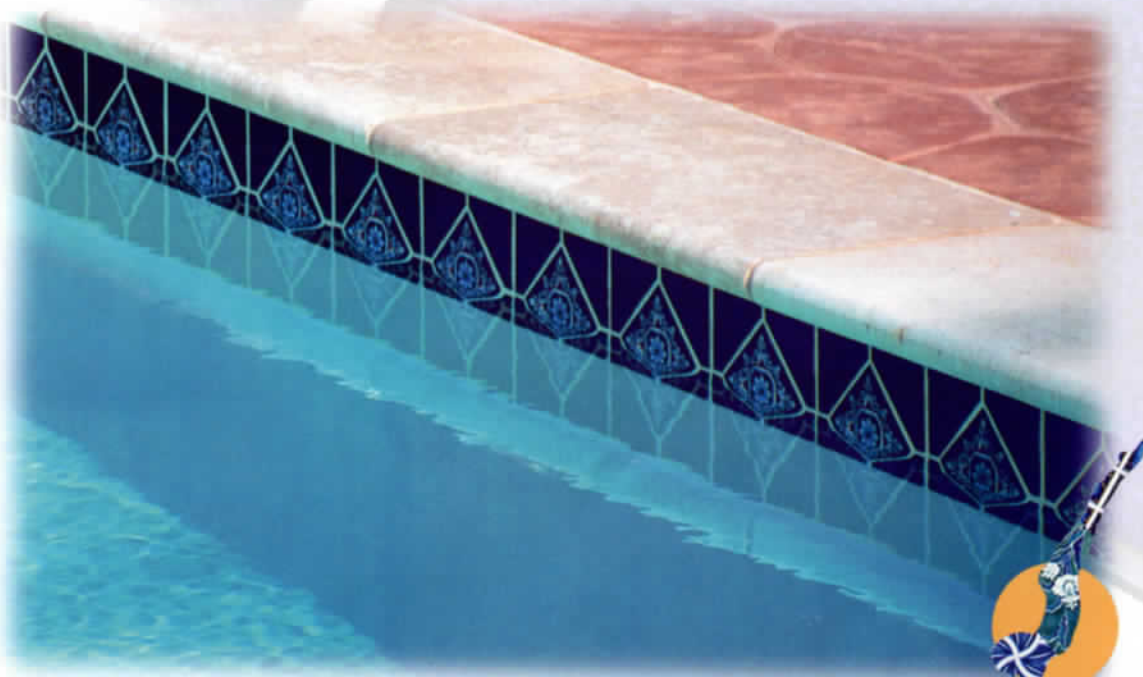
DS955
Caribbean Blue



Mix & Match

The *Discovery Field*, *Discovery Accent* (pg 22) and *California Dolphin* (pg 23) tiles are color coordinated. They have been designed for what is known as "Mix & Match." This allows you to create any number of striking variations in your tile design, while maintaining a harmonious color scheme. There's no limit to your imagination and personal expression with this select series of fully coordinated "Mix & Match" tiles.

Tile shown in photo at right is Discovery DS500 Cobalt Blue



To see how any of our tiles look installed, dive into our web site: www.nptgonline.com
Note: The shade of tiles or stone may vary within any given color - an inherent quality that enhances their beauty. Visually check the actual shade before installation.



Tiles shown in photo at left are Discovery Accent DAS33 Teal Blue with Discovery Field DSF33 Teal Blue

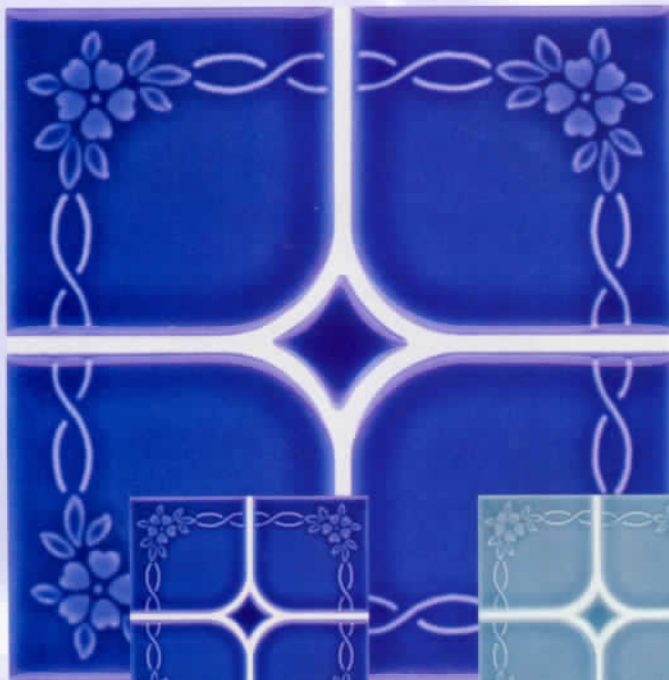
Mix & Match

The Discovery Field (pg 20), Discovery (pg 21), Discovery Accent and California Dolphin

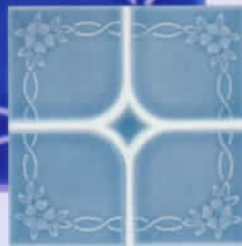
tiles are color coordinated.

They have been designed to "Mix & Match." This allows you to create any number of striking variations in your tile

design, while maintaining a harmonious color scheme. There's no limit to your imagination and personal expression with this select series of fully coordinated "Mix & Match" tiles.



DAS32 (shown enlarged)
Electric Blue



DAS33
Teal Blue



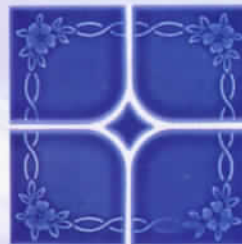
DAS75
Marine



DAS90
Marine Green



DAS91
Teal Green



DAS95
Caribbean Blue

Discovery Accent

1 sht. = 1.05 sq. ft.

California Dolphin

1 sht. = 1.05 sq. ft.



CD32
Electric Blue



CD33
Teal Blue



CD41 (shown enlarged)
Smoke Blue



CD75
Marine

Mix & Match

The *Discovery Field* (pg 20), *Discovery* (pg 21), *Discovery Accent* and *California Dolphin* tiles are color coordinated. They have been designed to "Mix & Match." This allows you to create any number of striking variations in your tile design, while maintaining a harmonious color scheme. There's no limit to your imagination and personal expression with this select series of fully coordinated "Mix & Match" tiles.

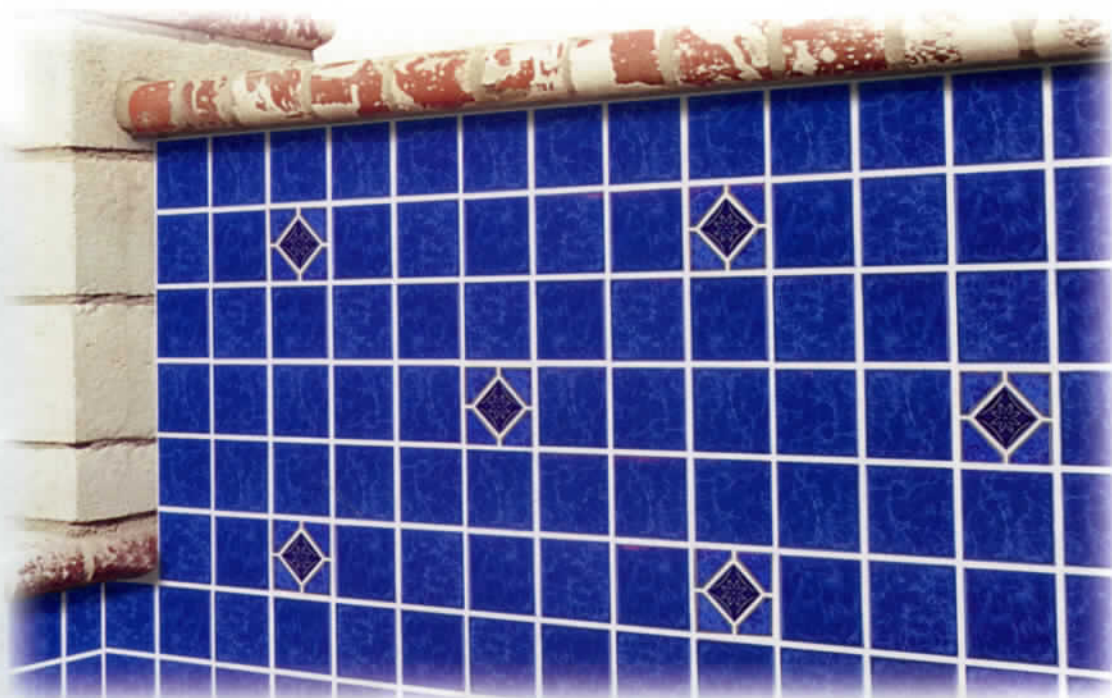
*Tiles shown in photo at right
are California Dolphin
CD33 Teal Blue
with Discovery Field DSF91
Teal Green, and
Mini Koyn MK / TK191
Teal Green*



To see how any of our tiles look installed, dive into our web site: www.nptgonline.com

Note: The shade of tiles or stone may vary within any given color – an inherent quality that enhances their beauty. Visually check the actual shade before installation.





Tiles shown in photo at left are Harmony HST344 Lake Blue with Star Mist STM991 Blueberry

Tip: when installing Harmony tiles on surfaces that meet at outside right angles, you can

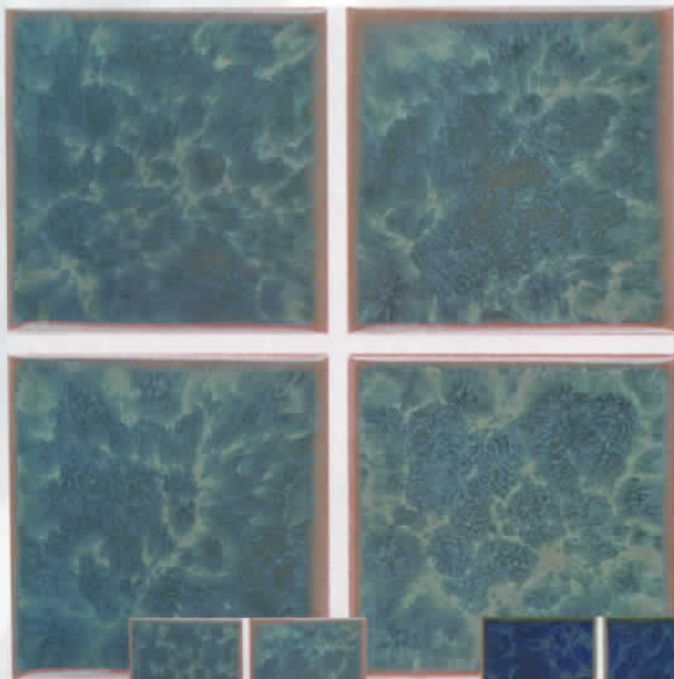


Bullnose Tiles

select from four types of trim to give you a rounded finished appearance.



Quarter Round Tiles



Harmony

3" x 3"

HS: 1 sht. = 1.05 sq. ft.

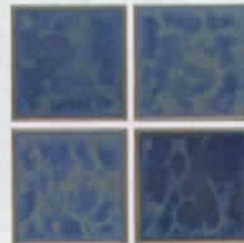
HST: 1 sht. = 1.0 sq. ft.



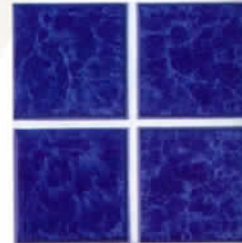
HS / HST331 (shown enlarged)
Olive Blue



HS / HST332
Ocean Blue



HS / HST341
Pacific Blue



HS / HST344
Lake Blue

Star Mist

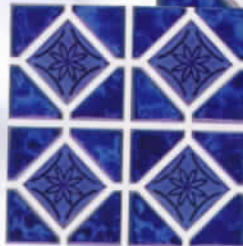
1 sht. = 1.05 sq. ft.



STM88
Teal



STM89
Turquoise



STM90 (shown enlarged)
Blue

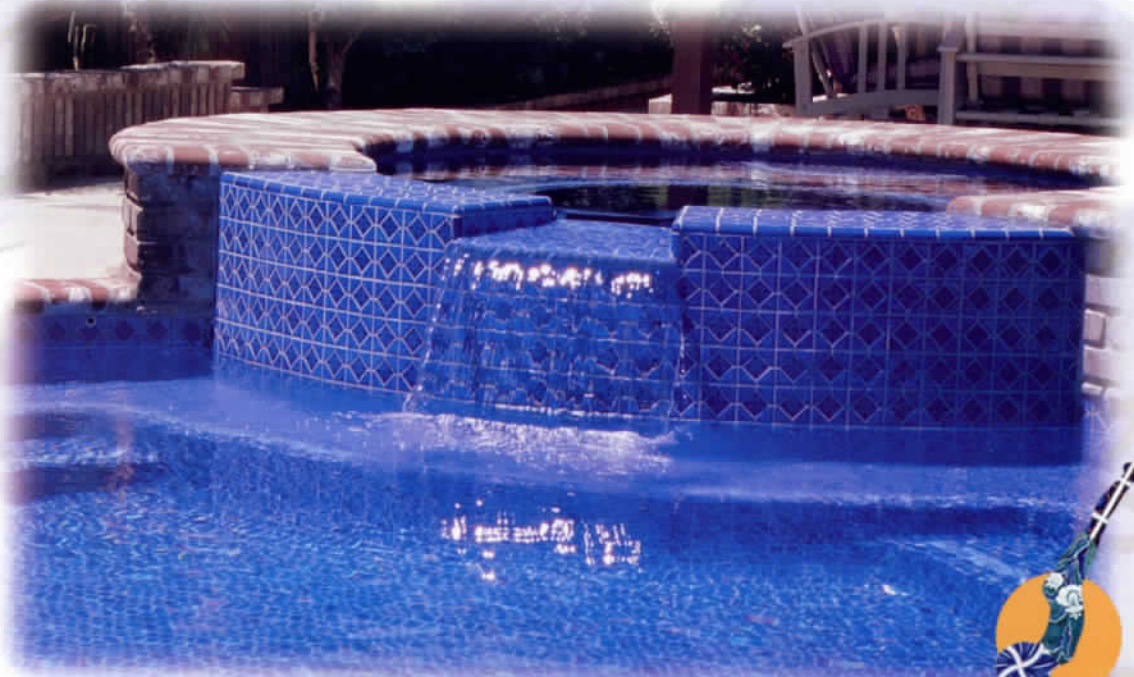


STM97
Tan

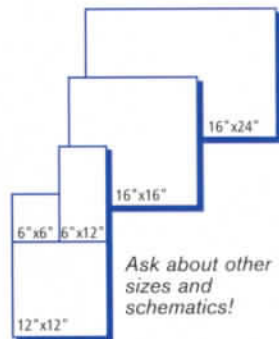


STM991
Blueberry

Tiles shown in photo
at right are
Star Mist STM991
Blueberry with
Mini Koyn MK / TK1344
Lake Blue



To see how any of our tiles look installed, dive into our web site: www.nptgonline.com
Note: The shade of tiles or stone may vary within any given color – an inherent quality that enhances their beauty. Visually check the actual shade before installation.



Ask about other sizes and schematics!

Tile shown in photo at left is Powerstone MC2330710 Newton Verde



Powerstone and matching Decking, 6" x 6", Imola

4 pcs. = 1.0 sq. ft. nominal



MC2336610
Copernico



MC2330310 (shown enlarged)
Galileo Beige



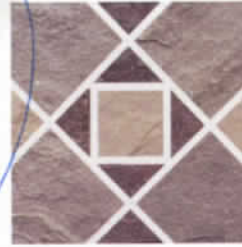
MC2330710
Newton Verde



MC233661D
Copernico Imola
(sold by 6" x 6" piece)



MC233031D
Galileo Beige Imola
(sold by 6" x 6" piece)



MC233071D
Newton Verde Imola
(sold by 6" x 6" piece)



Tip:

when installing Powerstone tile on surfaces that meet at an outside right angle edge, you can use a 3" x 12" bullnose tile to give a rounded, finished appearance.

Shabui and matching Imola

Decking, 6" x 6", Imola

4 pcs. = 1.0 sq. ft. nominal



RX74748ID
Indian Green Imola
(sold by 6" x 6" piece,
wide shade variations)



RX747BLUE (shown enlarged)
Pietra Blue
(wide shade variations)



RX7474810
Indian Green
(wide shade variations)



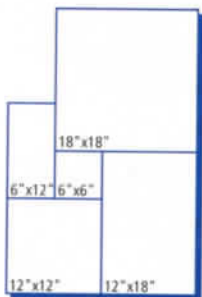
RX7477210
Rich Autumn
(wide shade variations)



RX74772ID
Rich Autumn Imola
(sold by 6" x 6" piece,
wide shade variations)



Tip: when installing **Shabui** tile on surfaces that meet at an outside right angle edge, you can use a 3" x 12" bullnose tile to give a rounded, finished appearance.



Ask about other sizes
and schematics!

Tile shown in photo at right is
Shabui Rich Autumn



To see how any of our tiles look installed, dive into our web site: www.nptgonline.com

Note: The shade of tiles or stone may vary within any given color - an inherent quality that enhances their beauty. Visually check the actual shade before installation.



Tile shown in photo at left is Tibet TBBLUE Blue and Tibet TBBLUE Blue Deco

Tip: the distinctive Tibet tiles are made with a unique process that creates a rustic edge for an authentic "old-world" feel.



Tibet

2" x 2", 6" x 6", Deco

6" x 6": 4 pcs. = 1.0 sq. ft. nominal
2" x 2": 1 sht. = 1.0 sq. ft.



TBBLUE (shown enlarged) Blue
(wide shade variations)



TBBLUE Deco (shown enlarged) Blue
(sold by 6" x 6" piece, wide shade variations)



TBBLUE2x2 Blue
(wide shade variations)



TBMULTI Multicolor
(wide shade variations)



TBMULTI Deco Multicolor
(sold by 6" x 6" piece, wide shade variations)



TBMULTI2x2 Multicolor
(wide shade variations)

Tip: when installing Tibet tile on surfaces that meet at an outside right angle edge, you can use a 3" x 12" bullnose tile to give a rounded, finished appearance.

Raku

2" x 2", 6" x 6", Deco

6" x 6": 4 pcs. = 1.0 sq. ft. nominal

2" x 2": 1 sht. = 1.0 sq. ft.



Tip: when installing Raku tile on surfaces that meet at an outside right angle edge, you can use a 3" x 12" bullnose tile to give a rounded, finished appearance.



RUCOCEAN2x2
Ocean
(wide shade variations)



RUCOCEAN Deco
Ocean
(sold by 6" x 6" piece,
wide shade variations)



RUCOCEAN
Ocean
(wide shade variations)



RUCOBALT2x2
Cobalt
(wide shade variations)



RUCOBALT Deco
Cobalt
(sold by 6" x 6" piece,
wide shade variations)



RUCOBALT (shown enlarged)
Cobalt
(wide shade variations)

Tile shown in photo
at right is Raku
RUCOCEAN Ocean



To see how any of our tiles look installed, dive into our web site: www.nptgonline.com
Note: The shade of tiles or stone may vary within any given color – an inherent quality that enhances their beauty. Visually check the actual shade before installation.



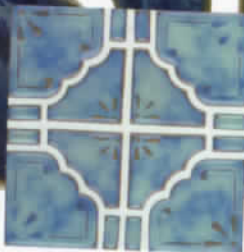


Tile shown in photo at left is Moonbeam ME33 Ocean Green



Moonbeam

*ME: 1 sht. = 1.0 sq. ft.
STB: 1 sht. = 0.98 sq. ft.*



ME21
Olive Blue



ME33 (shown enlarged)
Ocean Green



ME44
Lake Blue



STB807
Terra Blue



STB808
Cobalt Blue

Mini Koyn

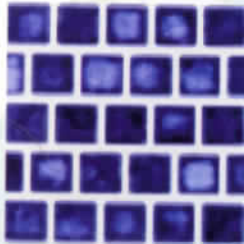
1" x 1"

MK: 1 sht. = 1.0 sq. ft.
TK: 1 sht. = 1.1 sq. ft.

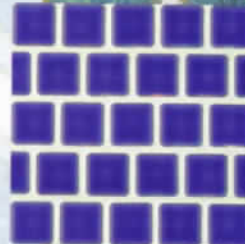
Note: MK stone size = 1 1/8" x 1 1/8"
TK stone size = 1" x 1"



MK / TK40
Sandy Beige



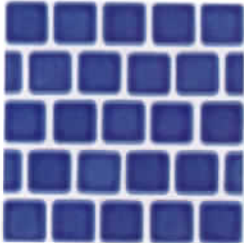
MK / TK105
Marbleized Royal Blue



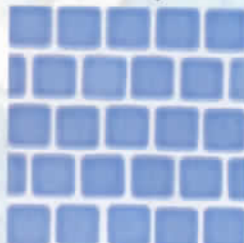
MK / TK132
Electric Blue



MK / TK191
Teal Green



MK / TK255
Caribbean Blue



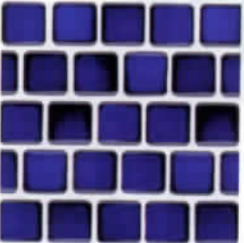
MK / TK262
Sky Blue



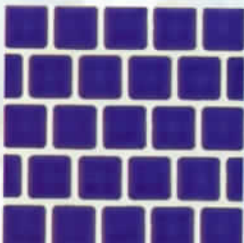
MK / TK400
Raised White



MK / TK501
White



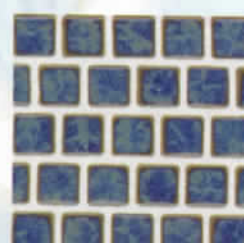
MK / TK560
Royal Blue



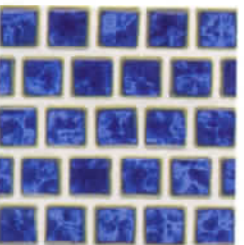
MK / TK1150
Cobalt



MK / TK1331 (shown enlarged)
Olive Blue



MK / TK1341
Pacific Blue



MK / TK1344
Lake Blue

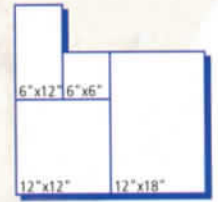


Tiles shown in photo at right are Mini Koyn MK / TK105 Marbleized Royal Blue with Marine Field M350 Cobalt Blue

To see how any of our tiles look installed, dive into our web site: www.nptgonline.com

Note: The shade of tiles or stone may vary within any given color – an inherent quality that enhances their beauty. Visually check the actual shade before installation.





Ask about other sizes and schematics!



Tile shown in photo above left is India RX3043 Sakura Deck tile shown-in photo above is India Dolphur



India and matching Imola

Decking, 6" x 6"
4 pcs. = 1.0 sq. ft. nominal

RX3043 (shown enlarged) Sakura (wide shade variations)

RX3044 Dolphur (wide shade variations)

RX3129 Peacock (wide shade variations)



RX3043ID Sakura Imola (sold by 6" x 6" piece, wide shade variations)

RX3044ID (shown enlarged) Dolphur Imola (sold by 6" x 6" piece, wide shade variations)

RX3129ID Peacock Imola (sold by 6" x 6" piece, wide shade variations)

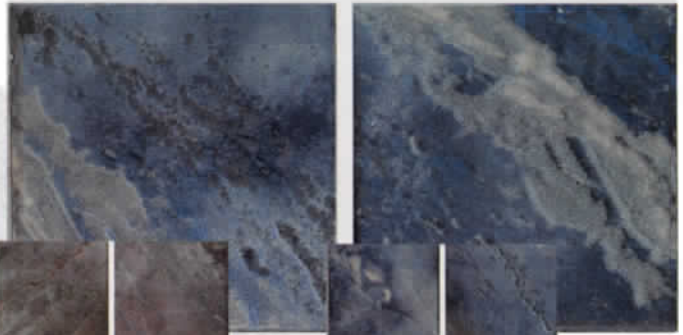
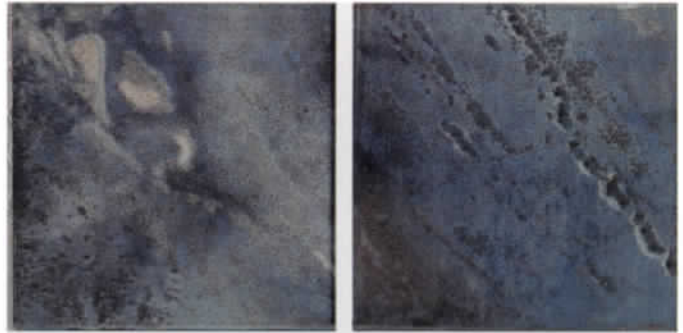


Tip: India when installing tile on surfaces that meet at outside right angles, you can use 3" x 12" bullnose tile to give a rounded, finished appearance.

Inca

3" x 3"

1 sht. = 1.06 sq. ft.



INC33
Sage (sold by 6" x 6" piece,
wide shade variations)



INC34
Earth (sold by 6" x 6" piece,
wide shade variations)



INC38 (shown enlarged)
Blue (sold by 6" x 6" piece,
wide shade variations)



Bullnose Tiles

Tip: when installing **Inca** tiles on surfaces that meet at outside right angles, you can select from four types of trim to give you a rounded, finished appearance.



Quarter Round Tiles

Tile shown in photo at
right is Inca Blue

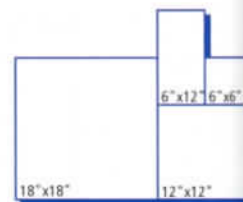


To see how any of our tiles look installed, dive into our web site: www.nptgonline.com

Note: The shade of tiles or stone may vary within any given color - an inherent quality that enhances their beauty. Visually check the actual shade before installation.



Deck tile shown in photo at left is Desert Rose RX7500310 Sabbia Dorata



Ask about other sizes and schematics!



Tip: when installing **Desert Rose** tile on surfaces that meet at outside right angles, you can use a 3" x 12" bullnose tile to give a rounded, finished appearance.



Desert Rose

Decking, 6" x 6"

4 pcs. = 1.0 sq. ft. nominal



RX7500310
Sabbia Dorata
(wide shade variations)



RX7502610
Sabbia Nera
(wide shade variations)



RX7504810
Sabbia Verde
(wide shade variations)



RX7506610
(shown enlarged)
Sabbia Rossa
(wide shade variations)

Catania

Tip: when installing **Catania** tile on surfaces that meet at outside right angles, you can use a 3" x 12" bullnose tile to give a rounded, finished appearance.

6" x 6"

4 pcs. = 1.0 sq. ft.



CATBLUE
Ocean

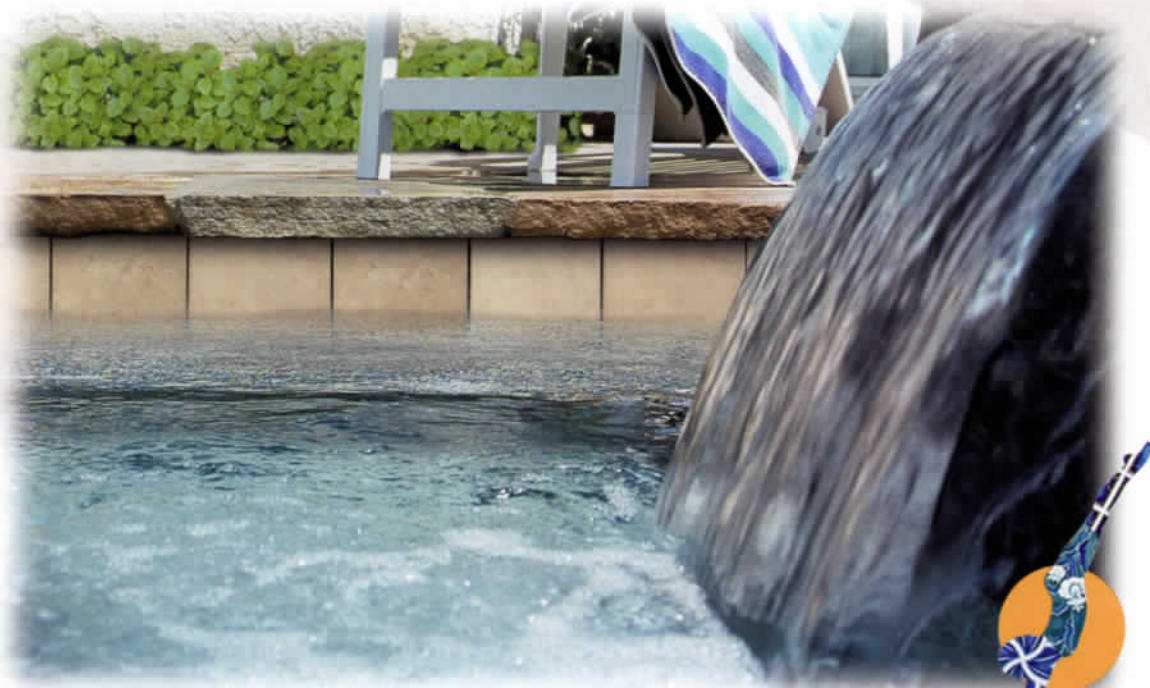


CATRUST
Earth



CATTAN
Sand

*Tile shown in photo
at right is Catania
CATTAN Sand*



To see how any of our tiles look installed, dive into our web site: www.nptgonline.com

Note: The shade of tiles or stone may vary within any given color – an inherent quality that enhances their beauty. Visually check the actual shade before installation.



Tile shown in photo
at left is Europe
EU33 Sage

Tip: when installing Europe tiles on surfaces that meet at outside right angles, you can select from four types of trim to give you a rounded finished appearance.



Bullnose Tiles



Quarter Round Tiles



Europe

3" x 3"

1 sht. = 1.05 sq. ft.



EU33
Sage



EU34
Sterling



EU36
Taupe



EU37
Amber



EU38 (shown enlarged)
Blue

Borrego

2" x 2" Border

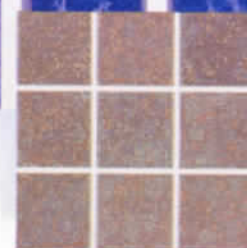
BG: 1 sht. = 0.94 sq. ft.
 BGF: 1 sht. = 1.1 sq. ft.
 BX: 1 sht. = 1.07 sq. ft.



BGF238
Blue



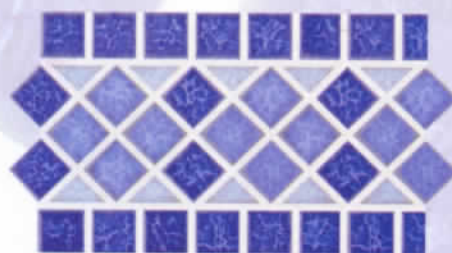
BGF244 / BX44
Lake Blue



BGF260
Beige



BG38
Blue



BG44 (shown enlarged)
Lake Blue



BG60
Beige



Tiles shown
in photos are
Borrego
BGF260 Beige
and BG60 Beige



To see how any of our tiles look installed, dive into our web site: www.nptgonline.com

Note: The shade of tiles or stone may vary within any given color - an inherent quality that enhances their beauty. Visually check the actual shade before installation.



Tile shown in photo at left is Graniti GRI623 Colombo



Tip: when installing Graniti tile on surfaces that meet at outside right angles, you can use a 3" x 12" bullnose tile to give a rounded, finished appearance.



GRI603 (shown enlarged)
Blue Pearl
(wide shade variations)



GRI623
Colombo
(wide shade variations)



GRI633
Giallo
(wide shade variations)

Graniti

6" x 6"

4 pcs. = 1.0 sq. ft. nominal

Carrera

6" x 6"

4 pcs. = 1.0 sq. ft. nominal

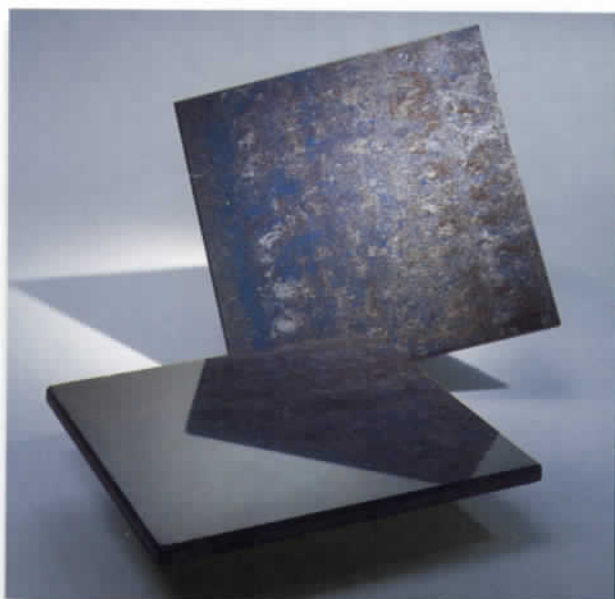
Tip: when installing **Carrera** tile on surfaces that meet at outside right angles, you can use a 3" x 12" bullnose tile to give a rounded, finished appearance.



CARBLUE
Baltic Blue
(high gloss surface)



CARGREEN (shown enlarged)
Imperial Green
(high gloss surface)



Tile shown in photo at right is **CARBLUE** Baltic Blue

Tip: the exciting **Carrera** tile combines a natural stone texture with a high-gloss, smooth surface that captures reflections from the sun and water.

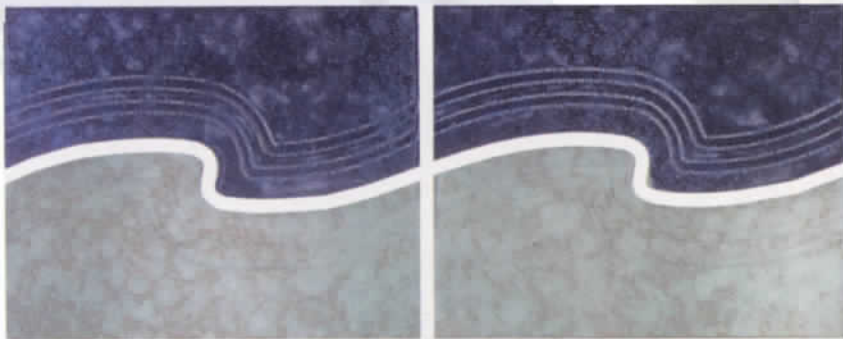


To see how any of our tiles look installed, dive into our web site: www.nptgonline.com

Note: The shade of tiles or stone may vary within any given color – an inherent quality that enhances their beauty. Visually check the actual shade before installation.



Tile shown in
photo at left is
Riptide RT5068
Cobalt / Terra Blue



Riptide

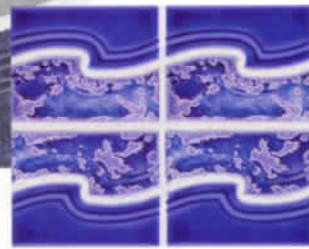
4 pcs. = 0.96 sq. ft. nominal



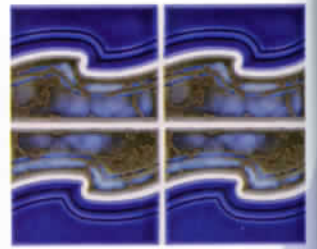
RT3836
Blue / Taupe



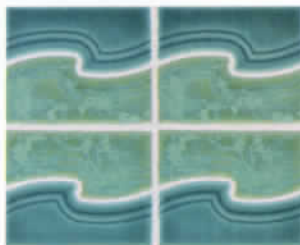
RT3833 (shown enlarged)
Blue / Sage



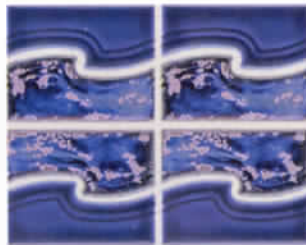
RT3206
Electric / Marble Lavender Blue



RT5068
Cobalt / Terra Blue



RT7504
Marine / Marble Green



RT9503
Caribbean / Marble
Caribbean Blue



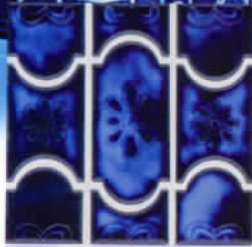
RT9507
Caribbean / Marble
Powder Blue

Botanical

1 sht. = 1.07 sq. ft.



Tile shown in photo above is Botanical BUE22 Sky Blue



BUE22
Sky Blue



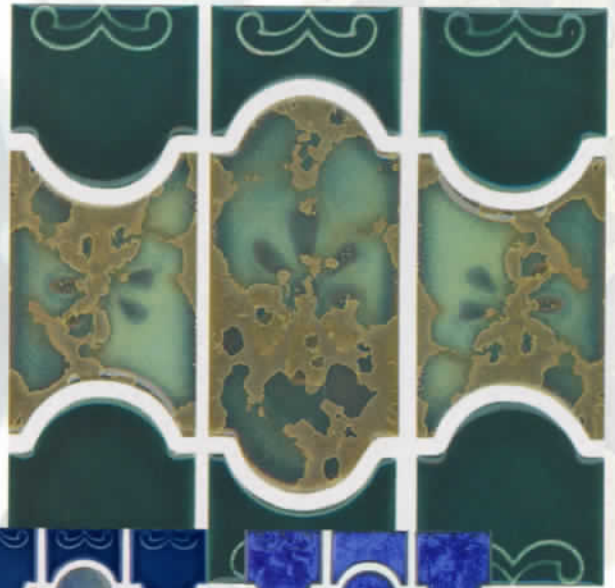
BUE37 (shown enlarged)
Teal



BUE40
Navy Blue



BUE44
Lake Blue

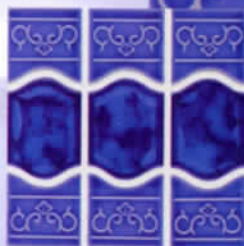


Sea Bluff

1 sht. = 1.05 sq. ft.



Tile shown in photo at left is Sea Bluff MBL907 Powder Blue



MBL905 (shown enlarged)
Royal Blue



MBL907
Powder Blue



To see how any of our tiles look installed, dive into our web site: www.nptgonline.com

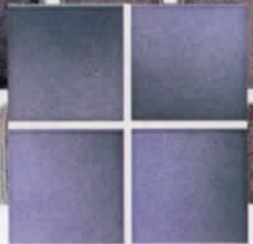
Note: The shade of tiles or stone may vary within any given color – an inherent quality that enhances their beauty. Visually check the actual shade before installation.



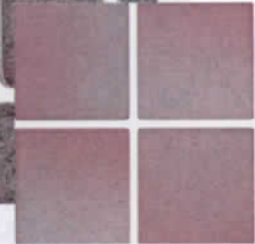


Kaleidoscope

1" x 1" 3" x 3"
 1" x 1": 1 sht. = 1.1 sq. ft.
 3" x 3": 1 sht. = 1.0 sq. ft.



KL325 Blue



KL345 Rose



KL365 Lavender



KL125 Blue



KL145 Rose (shown enlarged)



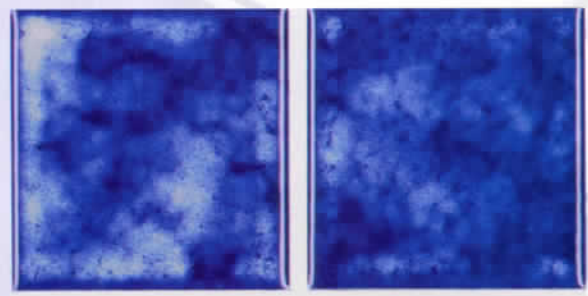
KL165 Lavender

Tile shown in photo above is Kaleidoscope KL365 Lavender



Quarter Round Tiles

Tip: Kaleidoscope and Akron Field available in four types of trim to give you a rounded, finished appearance.



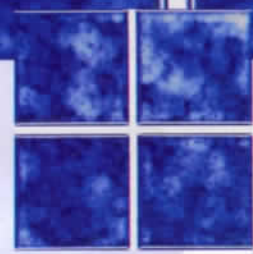
Akron Field

3" x 3"
 1 sht. = 1.05 sq. ft.



Bullnose Tiles

Tile shown in photo at right is Akron Field KAK307 Powder Blue



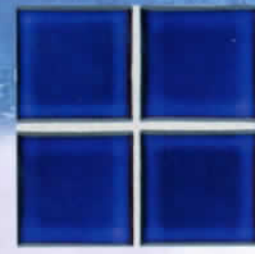
KAK305 (shown enlarged) Royal Blue



KAK307 Powder Blue



KAK325 Cloud Blue



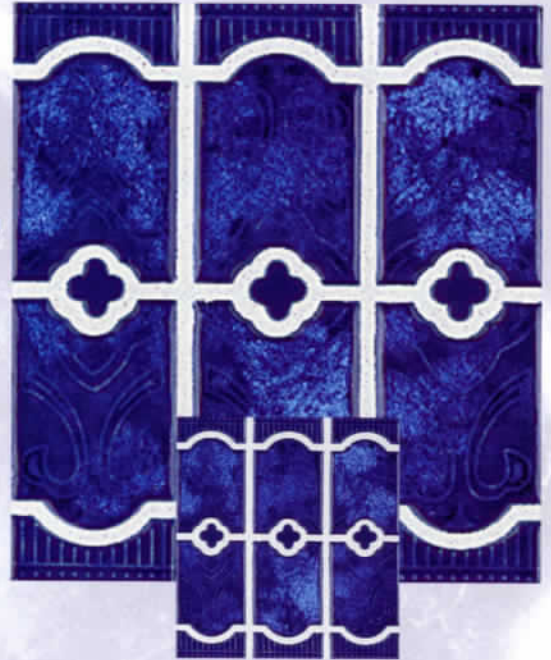
KAK2000 Blue



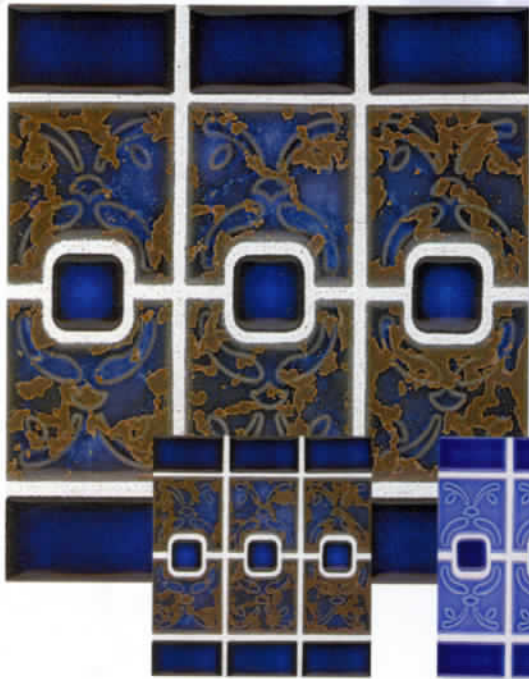
Tile shown in photo above is
Del Mar DM105 Royal Blue

Del Mar

1 sht. = 1.1 sq. ft.



DM105 (shown enlarged)
Royal Blue



LC-2440S (shown enlarged)
Terra

LC-4141
Electric Blue

Florida

FL: 1 sht. = 1.04 sq. ft.
LC: 1 sht. = 1.15 sq. ft.

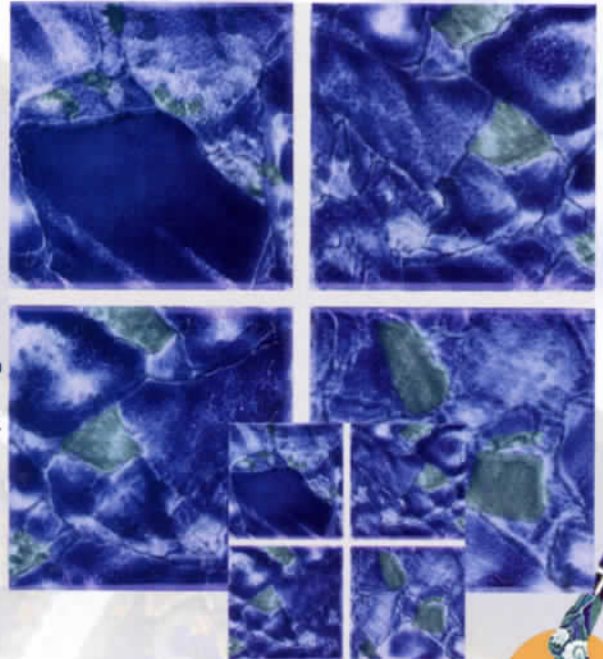
La Granito

3" x 3"

1 sheet = 1.06 sq. ft.



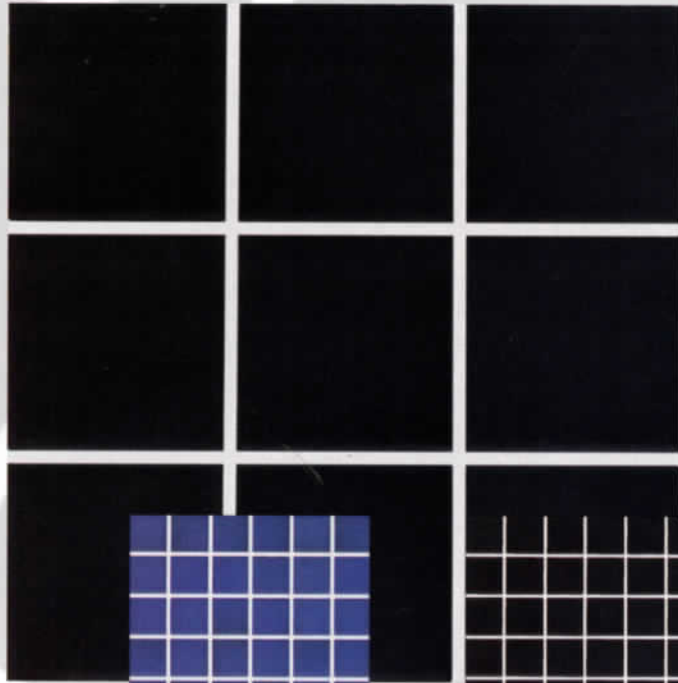
Tile shown in photo above is
La Granito LG90 Blue



LG90 (shown enlarged)
Blue

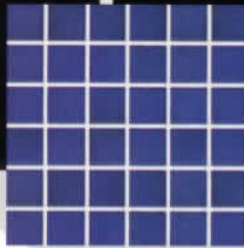
To see how any of our tiles look installed, dive into our web site: www.nptgonline.com
Note: The shade of tiles or stone may vary within any given color – an inherent quality that enhances their beauty. Visually check the actual shade before installation.



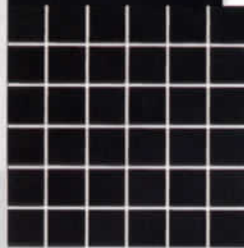


1" x 1", 2" x 2" Un glazed

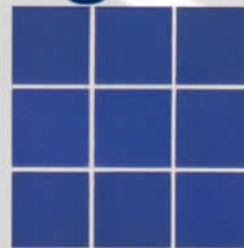
1 sht. = 2.0 sq. ft.



150UN / LS145
1" x 1" Cobalt



169UN / LS102
1" x 1" Black



250UN / LS45
2" x 2" Cobalt



269UN / LS02 (shown enlarged)
2" x 2" Black



2" x 2" Tiles

BX: 1 sht. = 1.07 sq. ft.

HM: 1 sht. = 1.088 sq. ft.



BX21
Olive Green

BX32
Ocean Green

BX44
Lake Blue



BX68
Terra Blue



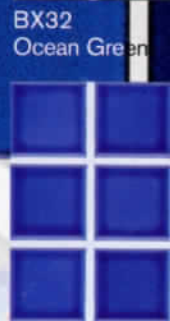
BX91
Teal Green



BX250
Cobalt



HM206
(shown enlarged)
Cobalt Blue



HM220
Electric Blue



HM233
Marine



HM240
Navy Blue

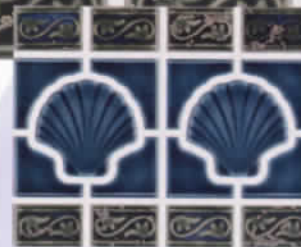
Atlantic Shell

1 sht. = 0.96 sq. ft.

*Tile shown in photo above
is Atlantic Shell AT7504
Marine/Marine Green*



AT7504
Marine/Marine Green



AT9109 (shown enlarged)
Teal/Marine Green

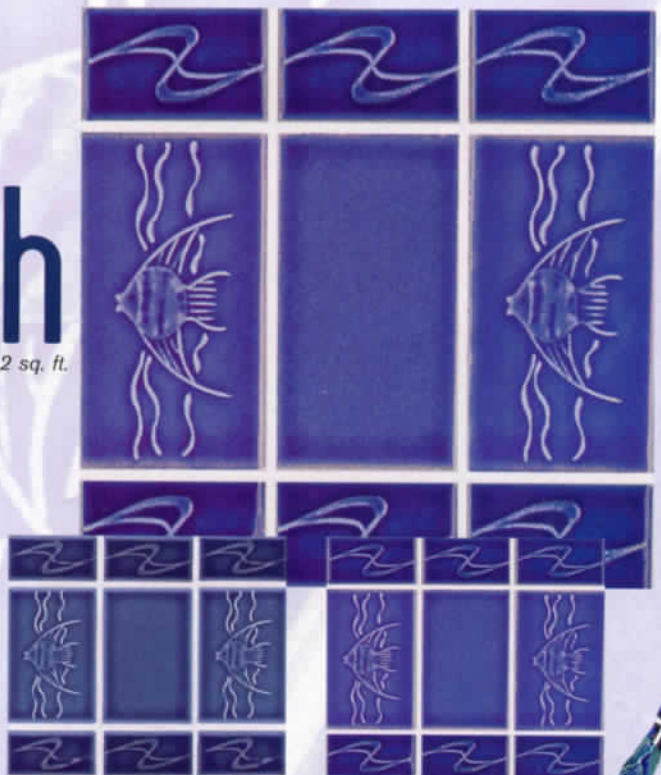


AT9503
Caribbean/Marble
Caribbean Blue



Angel Fish

1 sht. = 1.2 sq. ft.

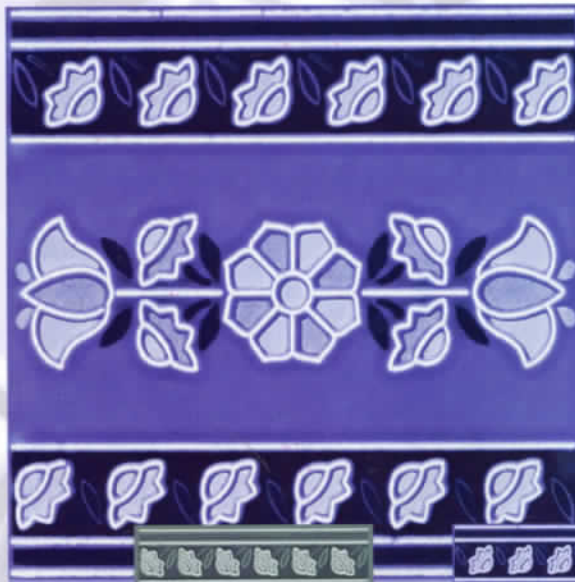


YAF10
Indigo Blue

YAF60 (shown enlarged)
Twilight Blue

To see how any of our tiles look installed, dive into our web site: www.nptgonline.com
Note: The shade of tiles or stone may vary within any given color – an inherent quality that enhances their beauty. Visually check the actual shade before installation.



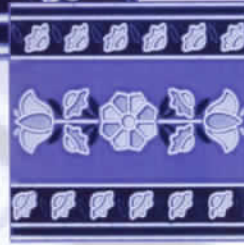
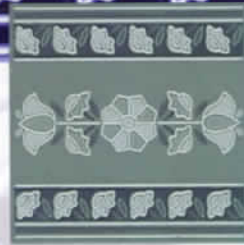


M6783
Teal Tulip

New Tulip

6" x 6"

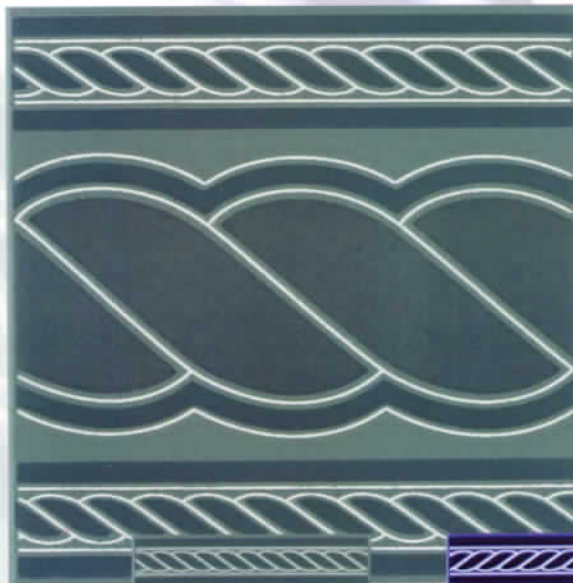
4 pcs. = 1.0 sq.
ft. nominal



M6784 (shown enlarged)
Cobalt Tulip



Tile shown in photo above is M6783 Teal Tulip
with 6" x 6" Solids M6766 Turquoise



M6778 (shown enlarged)
Teal Rope

Rope

6" x 6"

4 pcs. = 1.0 sq. ft. nominal

Mix & Match

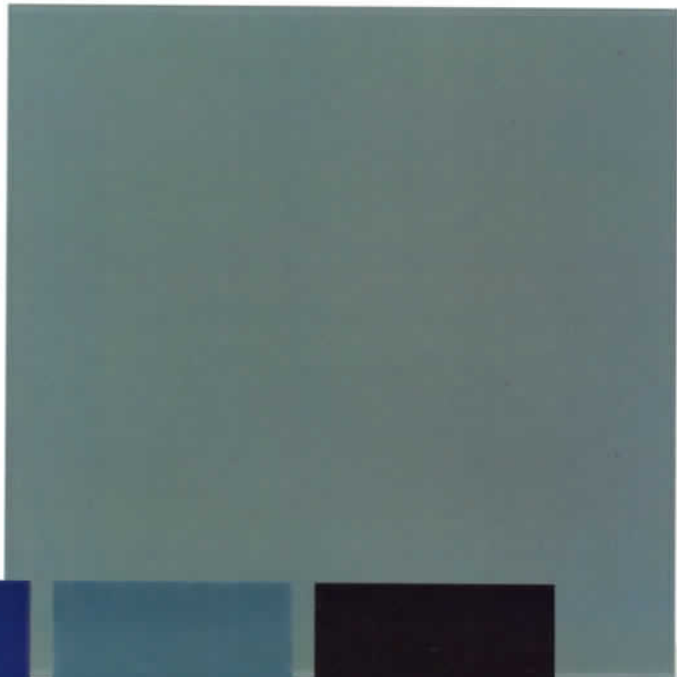
The 6" x 6" Solids (opposite page), New Tulip and Rope tiles are color coordinated. They have been designed for what is known as "Mix & Match." This allows you to create any number of striking variations in your tile design, while maintaining a harmonious color scheme. There's no limit to your imagination and personal expression with this select series of fully coordinated "Mix & Match" tiles.



M6779
Cobalt Rope

6"x6" Solids

4 pcs. = 1.0 sq. ft. nominal



K638
Slate



K646
Navy Blue



K663
Mercedes Blue



K667
Matte Black



K675
Marine Mercedes Blue



K693
Evergreen



K694
Aqua



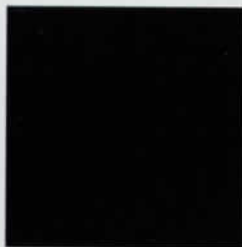
M6761
Light Blue



M6762
White



M6764
Cobalt



M6765
Black



M6766 (shown enlarged)
Turquoise

Mix & Match

The 6"x6" Solids, *New Tulip* (opposite page) and *Rope* (opposite page) tiles are color coordinated. They have been designed for what is known as "Mix & Match." This allows you to create any number of striking variations in your tile design, while maintaining a harmonious color scheme. There's no limit to your imagination and personal expression with this select series of fully coordinated "Mix & Match" tiles.

To see how any of our tiles look installed, dive into our web site: www.nptgonline.com

Note: The shade of tiles or stone may vary within any given color - an inherent quality that enhances their beauty. Visually check the actual shade before installation.

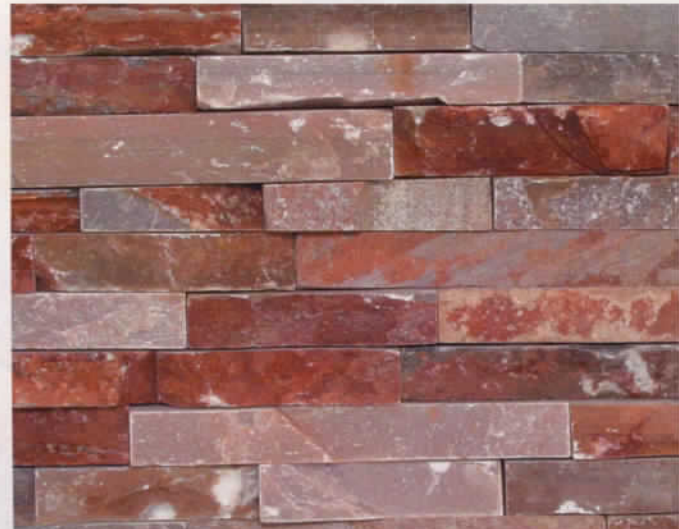




Stone/tile shown in photo at left are Ledger Stone STLSFRU Rust with Desert Rose RX7506610 Sabbia Rossa decking

Interlocking stone surface & corners

Irregular stacked surface with wide color and thickness variation fits together easily for a naturally random appearance



Ledger Stone

Interlocking wall & surface stone

1 sht. = 1.3 sq. ft.



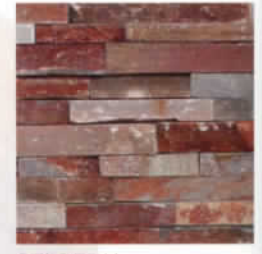
STLSFBA
Bark



STLSFBUFF
Buff



STLSFCL
Classic



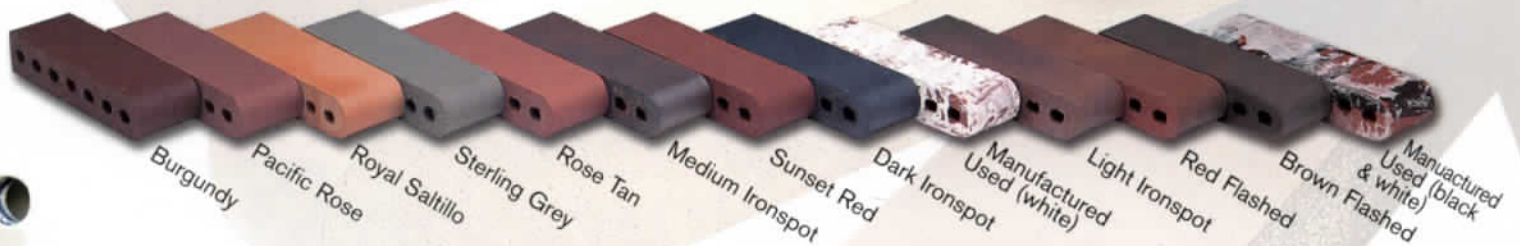
STLSFRU
Rust



Bricks

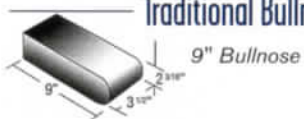
NPTG carries one of the largest selections of **Brick Coping** available anywhere.

Please contact your local office for more information!



Safety Grip Bullnose also available!

Traditional Bullnose



9" Bullnose



12" Bullnose



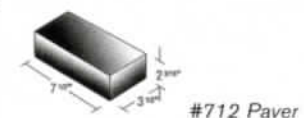
Safety Grip Bullnose

12" Bullnose

Brick Pavers



#758 Paver

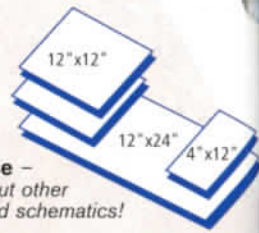


#712 Paver

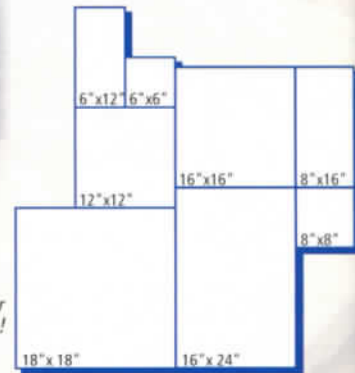


To see how any of our tiles look installed, dive into our web site: www.nptgonline.com

Note: The shade of tiles or stone may vary within any given color – an inherent quality that enhances their beauty. Visually check the actual shade before installation.



Bullnose – Ask about other sizes and schematics!



Deck stone shown in photo above is Durango Viejo Tumbled

Pavers – Ask about other sizes and schematics!



Durango Stone

Coping & Pavers

Natural stone products with wide color variation and some thickness variation



Noche Honed Coping and pavers



Oro Honed Coping and pavers



Rojo Honed Coping and pavers



Viejo Honed Coping and pavers



Noche Tumbled Coping and pavers



Oro Tumbled Coping and pavers



Rojo Tumbled Coping and pavers



Viejo Tumbled Coping and pavers

Quartzite Coping & Decking

4"x12", 12"x12" Coping, Mosaic Tile,
and color coordinated Interlocking Mesh-Mounted Decking

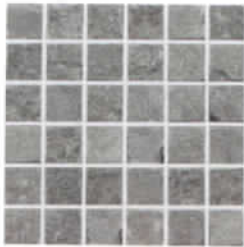
Natural stone products with wide color variation and some thickness variation.

Mesh decking = approx. 6' sq. ft. per netted sheet

Note: wide shade and texture variation, please inspect actual stone before installation.



STXLPINWHEEL
Pinwheel Mosaic
1 sht. = 1.0 sq. ft.



STXLRAINBOW
Rainbow Mosaic
1 sht. = 1.0 sq. ft.



STXLVERDE
Verde Brick Pattern
1 sht. = 1.0 sq. ft.

Interlocking Mesh-Mounted Decking 6.2 sq. ft. per netted sheet

Easily fits together for a random, natural look.
Wide shade and texture variations.



4"x12" & 12"x12" Coping

Wide shade and texture variations.

Tile shown in photo at right is Quartzite Mesh Decking, Quartzite Coping and Borrego BG60 Beige.



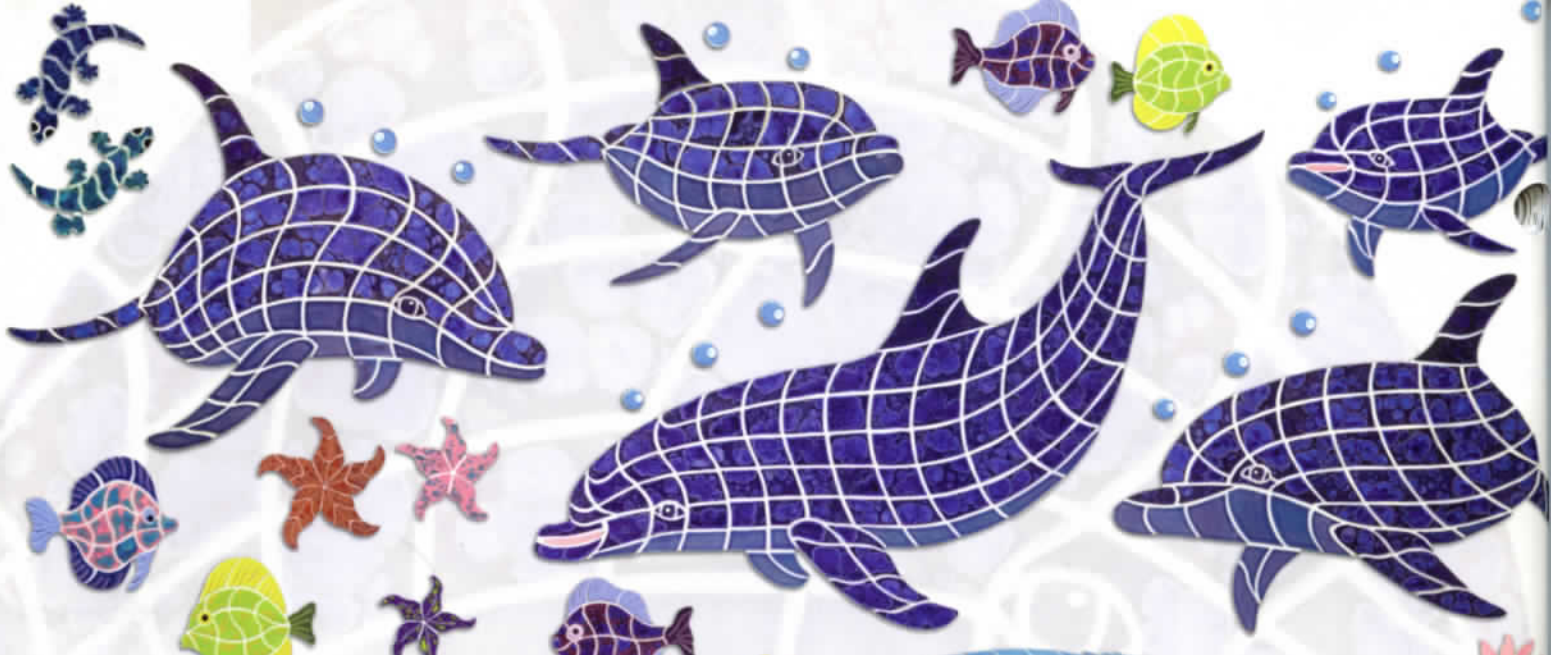
STXL004FIELD
Quartz Random Field
1 panel = 6.2 sq. ft.



To see how any of our tiles look installed, dive into our web site: www.nptgonline.com

Note: The shade of tiles or stone may vary within any given color – an inherent quality that enhances their beauty. Visually check the actual shade before installation.





Mosaics

With one of the largest selections of **Mosaics** available anywhere, you are sure to find just the right accent for your pool or spa. Only a few samples are shown here, for more information, please ask for a brochure! *Note: Mosaics sold piece by piece. Mosaics pictured are not to scale.*







California

2840 Miraloma Avenue
Anaheim, CA 92806
ph: (714) 630-2216
fx: (714) 630-0758



1166 Fesler Street,
Suite C
El Cajon, CA, 92020
ph: (619) 449-2545
fx: (619) 449-2770



5640 La Ribera, Unit B
Livermore, CA 94550
ph: (925) 294-8727
fx: (925) 294-8733



201 Harris Avenue, Unit
10
Sacramento, CA 95838
ph: (916) 564-7323
fx: (916) 564-7351



Arizona

2440 West University
Tempe, AZ 85281
ph: (480) 968-9929
fx: (480) 968-9926



3782 East 43rd Place
Tucson, AZ 85713
ph: (520) 745-2949
fx: (520) 745-2978



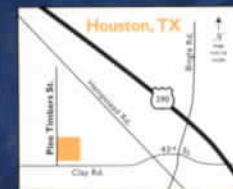
Nevada

5270 South Procyon
Street
Las Vegas, NV 89118
ph: (702) 739-6000
fx: (702) 739-6082



Texas

2819 Blystone Lane
Dallas, TX 75220
ph: (214) 366-4009
fx: (214) 366-4022



4300 Pine Timbers,
#116
Houston, TX 77041
ph: (713) 460-8794
fx: (713) 460-0598



Florida

150 National Place, Suite 150
Longwood, FL 32750
ph: (407) 834-4494 • (800) 575-1577 (toll free)
fx: (407) 834-8808 • (800) 466-5229 (toll free)



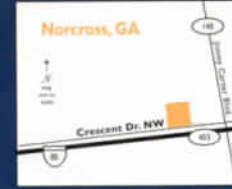
6026 Lee Ann Lane
Naples, FL 34109
ph: (239) 593-6521 • (877) 224-0646 (toll free)
fx: (239) 593-6575 • (877) 224-7524 (toll free)



1631 South Dixie Highway
Pompano Beach, FL 33060
ph: (954) 943-6190 • (800) 943-2930 (toll free)
fx: (954) 943-6324 • (800) 943-2931 (toll free)



1289 Porter Road, Building #1
Sarasota, FL 34240
ph: (941) 342-1393 • (800) 707-0843 (toll free)
fx: (941) 342-0833 • (800) 707-0833 (toll free)



Southeast

6485 Crescent Drive, Suite B
Norcross, GA 30071
ph: (770) 368-8440 • (800) 466-8453 (toll free)
fx: (770) 368-0359 • (800) 466-5332 (toll free)



Northeast

203 Progress Drive
Montgomeryville, PA 18936
ph: (215) 661-2950 • (877) 816-8453 (toll free)
fx: (215) 661-2906 • (877) 890-7665 (toll free)

 **POOL TILE™
and STONE**

www.nptgonline.com
888-411-TILE