

2007

# MasterTile

pool & spa tile

LittleTileInc.com



Master Tile Pool Division supplies the finest in swimming pool tile, coping, plastering, and decking products. Since our origin in 1998, Master Tile has been a leader in the introduction of new and innovative products for the swimming pool industry. We import waterline tile from premium manufacturers throughout the world. Our coping lines include kiln-fired clay brick as well as imported natural stones.

We have locations in Houston, Dallas, Oklahoma City, New Jersey, Tampa, Anaheim, Las Vegas and Sacramento. Through our numerous locations and well-stocked inventory, Master Tile is capable of shipping material directly to customers, anywhere in the U.S. on a daily basis. Our state-of-the-art showrooms and website offer our customers an opportunity to manipulate and view their tile and coping selections in a way that will allow them to visualize them on a pool. Master Tile also supplies samples to further assist in the selection process.

You may call or visit us online at [www.MasterTilePool.com](http://www.MasterTilePool.com)

## PRODUCT DIRECTORY

2x2 GRANITONE . . . .31	26 . . . . .LUCIANA
2x2 REFLECTION . . . .23	19 . . . . .LUNAR STONE
2x2 SPARKLE . . . .31	21 . . . . .MARBLEIZED
2x2 UNGLAZED . . . .31	22 . . . . .MINI AKRON
3x3 FIELD . . . .33	33 . . . . .MIX 1x1
3x3 REFLECTION . . . .23	38-39 . .NATURAL SLATE COPING & DECK TILE
6x6 FIELD . . . .29	36-37 . .NATURAL STONE
ANGEL FISH . . . .27	37 . . . . .NATURAL STONE PAVERS
ANTILLE . . . .25	5 . . . . .NEPAL
AQUA . . . .26	41 . . . . .NU-DECK
ARTISTRY IN MOSAICS . .42-43	12 . . . . .OPEN WATER
BELLAGIO . . . .8	4 . . . . .OPUS
BUENOS . . . .22	25 . . . . .OS
CAS RV . . . .14	33 . . . . .PENNY ROUND
COPING BRICK . . . .40	17 . . . . .PIETRA
CRYSTAL . . . .25	41 . . . . .PLASTER FINISHES
CRYSTAL ICE AKRON . . . .21	41 . . . . .POLARIS POWERFALLS
DEPTH MARKERS . . . .41	9 . . . . .RANDOM
DESERT . . . .32	19 . . . . .RIDGE STONE
DESERT CANYON . . . .9	3 . . . . .ROCKY STREAM
DIAMOND . . . .27	18 . . . . .ROMAN
DIAMOND REFLECTION . . . .23	19 . . . . .ROPE
DIAMOND STONE . . . .28	10-11 . . .ROSETTA
DOLPHIN . . . .27	16 . . . . .SANDSTONE
DOUBLE DOLPHIN . . . .27	26 . . . . .SEA BLUFF
DRY TREAT SEALERS . . . .35	29 . . . . .SHADOW
EARTH STONE PEBBLE . . . .31	15 . . . . .SHAPURA
EARTHSCAPES . . . .14	26 . . . . .SHELL
EL ORO . . . .5	32 . . . . .SHORELINE 1x1
FLAGSTONE . . . .28	18 . . . . .SNAKE SKIN
FROST PROOF TRIM . . . .35	13 . . . . .SOLE SLATE
GLASS BLOCK . . . .41	7 . . . . .SPACCO DICAVA
HARMONY 100 1x1 . . . .32	6 . . . . .STARDUST
HARMONY 200 2x2 . . . .30	28 . . . . .STONE
HARMONY 300 3x3 . . . .30	24 . . . . .SUN
IL VIETRI 1x1 . . . .32	24 . . . . .SUNBURST
IRIDE . . . .4	12 . . . . .TIBURTONE
IRIDIUM . . . .15	8 . . . . .TICO TACO
ITA . . . .17	16 . . . . .VAL
LATINA . . . .6	34 . . . . .WATER FEATURES
LISTELLO . . . .20	24 . . . . .WATERSIDE
LISTELLO STONE . . . .20	18 . . . . .WAVE

\*Denotes corresponding step trim

# Rocky Stream SERIES

3 x 3

1 Sheet = 1.05 SF



MAS RKF 310

\*MAS HM 120 / MAS HM106



MAS RKF 320

\*MAS GM 28 / MAS DS 171 M



MAS RKF 330

\*MAS DS 171 M / MAS GM 21



MAS RKF 340

\*MAS HM 162 / MAS HM 124



MAS RKF 610

\*MAS HM 120 / MAS HM106



MAS RKF 620

\*MAS GM 28 / MAS DS 171 M



MAS RKF 630

\*MAS DS 171 M / MAS GM 21



MAS RKF 640

\*MAS HM 162 / MAS HM 124

6 x 6  
4 Pieces = 1 SF



Mosaic

1 Sheet = 1.05 SF



MAS RK 1

\*MAS HM 120 / MAS HM106



MAS RK 2

\*MAS GM 28 / MAS DS 171 M



MAS RK 3

\*MAS DS 171 M / MAS GM 21



MAS RK 4

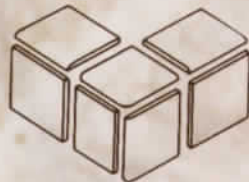
\*MAS HM 162 / MAS HM 124

*Expect  
shade  
variation*



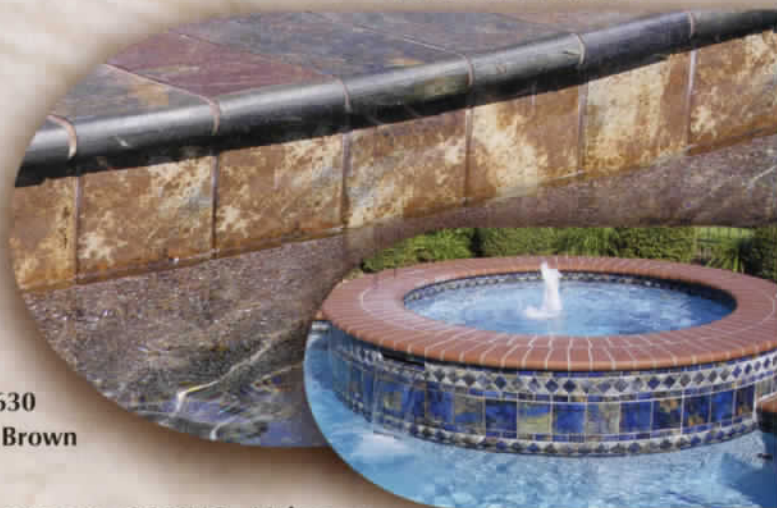
1x6 Quarter Round  
trim available in the  
Rocky Stream Series

3x3 Surface Bullnose  
trim available in the  
Rocky Stream Series



TILE: MAS RKF 630  
COPING: Chestnut Brown

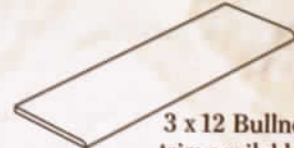
TILE: MAS RK 4 & MAS RKF 640 COPING: Mahogany



Shade variations are an inherent characteristic of all kiln-fired ceramic tiles. Please inspect actual shade of tile before installation.  
Use constitutes acceptance.

# Iride SERIES

*Expect shade variation*



3 x 12 Bullnose trim available in the Iride Series

4 Pieces = 1 SF \* Denotes corresponding step trim



CDS IRI BLU 6

\*MAS 1x1 RAI / MAS DS 142 M



CDS IRI BLU DEC



CDS IRI CAR 6

\*MAS DS 171 M  
\*MAS GM 28



CDS IRI CAR DEC



TILE: CDS IRI CRM 6 & DECO



CDS IRI CRM 6

\*MAS 1 x 1 SUN  
\*MAS GM 60



CDS IRI CRM DEC



CDS IRI RAI 6

\*MAS GM 21  
\*MAS DS 171 M



CDS IRI RAI DEC

# Opus SERIES

3 x 12 Bullnose trim available in the Opus Series



4 Pieces = 1 SF  
\* Denotes corresponding step trim



CER OPU ROS 6

\*MAS GM 60 / MAS 1x1 SUN



CER OPU OCR 6

\*MAS GM 60 / MAS 1x1 SUN



CER OPU GOL 6

\*MAS HM 164 / MAS GM 22

*Expect shade variation*



TILE: CER OPU ROS 6  
STEP TRIM: MAS GM 60

# El Oro SERIES



3 x 12 Bullnose  
trim available in  
the El Oro Series

4 Pieces = 1 SF \* Denotes corresponding step trim



MAS ELO GOL 30 6  
\*MAS 1x1 RAI  
\*MAS DS 142 M



MAS ELO GOL 70 6  
\*MAS 1x1 JUN  
\*MAS GM 44

*Expect  
shade variation*



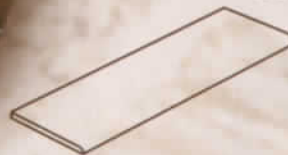
TILE: MAS ELO GOL 30 6



TILE: ALF NEP BEH 6

# Nepal SERIES

4 Pieces = 1 SF \* Denotes corresponding step trim



3 x 12 Bullnose  
trim available in  
the Nepal Series



ALF NEP BEH 6  
\*MAS HM 164 / MAS GM 28



ALF NEP RAJ 6  
\*MAS 1 x 1 SUN / MAS GM 21



ALF NEP SAN 6  
\*MAS GM 71 / MAS DS 171 M

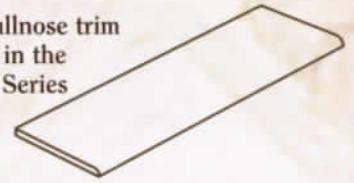
*Expect extreme  
shade variation*

Shade variations are an inherent characteristic of all kiln-fired ceramic tiles. Please inspect actual shade of tile before installation. Use constitutes acceptance.

# Stardust SERIES



3 x 12 Bullnose trim  
available in the  
Stardust Series



4 Pieces = 1 SF \* Denotes corresponding step trim

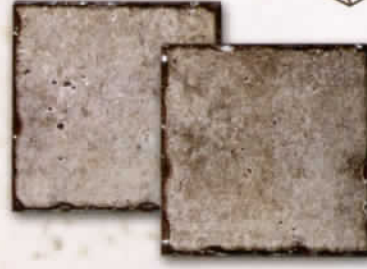


CDS STAR SIE 6

\*MAS 1x1 RAI / MAS DS 142M



CDS STAR SIE DEC



CDS STAR BIA 6

\*MAS GM 22  
\*MAS 1x1 CLO



CDS STAR BIA DEC

*Expect shade  
variation*



CDS STAR GRI 6

\*MAS HM 150 / MAS GM 82



CDS STAR GRI DEC



CDS STAR ROS 6

\*MAS 1x1 SUN / MAS GM 60

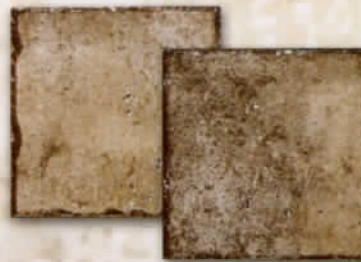


CDS STAR ROS DEC



TILE: CDS STAR ROS 6 & Deco

COPING: Torreon Tumbled

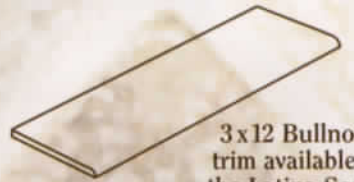


CDS STAR BEI 6

\*MAS DS 171M / MAS GM 28



CDS STAR BEI DEC



3 x 12 Bullnose  
trim available in  
the Latina Series

# Latina SERIES



6x6 4 Pieces = 1 SF 3 x 3 1 Sheet = .99 SF

\* Denotes corresponding step trim



NOR LAT BOT 6

\*MAS 1x1 CLO / MAS DS 171M



NOR LAT BOT 3

\*MAS 1x1 CLO / MAS DS 171M



NOR LAT NOC 6

\*MAS DS 171M / MAS GM 28



NOR LAT NOC 3

\*MAS DS 171M / MAS GM 28

Expect extreme  
shade variation

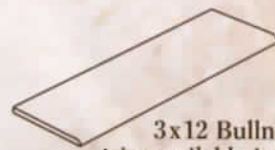
# Spacco DiCava SERIES



TILE: SAI SPA BIA 6  
COPING: Sienna Gold Tumbled

4 Pieces = 1 SF

\* Denotes  
corresponding step trim



3x12 Bullnose  
trim available in the  
Spacco DiCava Series



SAI SPA ANT 6    SAI SPA ANT DEC  
\*MAS HM 150 / MAS GM 82

*This series has  
irregular edges*



SAI SPA AUR 6    SAI SPA AUR DEC  
\*MAS HM 164 / MAS GM 22



SAI SPA ROS 6    SAI SPA ROS DEC  
\*MAS DS 171M / MAS 1x1 SUN



SAI SPA DOR 6    SAI SPA DOR DEC  
\*MAS HM 164 / MAS GM 28



SAI SPA BRU 6    SAI SPA BRU DEC  
\*MAS DS 171M / MAS GM 28



SAI SPA BIA 6    SAI SPA BIA DEC  
\*MAS 1x1 CLO / MAS GM 22



TILE: SAI SPA BRU 6  
& Deco  
COPING: Gray Stone

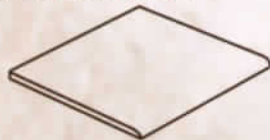
Shade variations are an inherent characteristic of all kiln-fired ceramic tiles. Please inspect actual shade of tile before installation.  
Use constitutes acceptance.

4 Pieces = 1 SF

\* Denotes corresponding step trim

# Bellagio SERIES

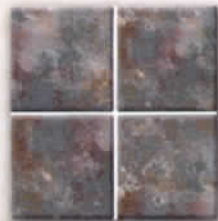
*Expect shade variation*



6 x 6 Bullnose trim available in the Bellagio Series



**SOL BEL GRA 3**  
\*MAS HM 150  
\*MAS GM 28



**SOL BEL COB 3**  
\*MAS HM 150  
\*MAS GM 82



**SOL BEL AZU 3**  
\*MAS DS 142M  
\*MAS 1x1 RAI



**SOL BEL GIA 3**  
\*MAS 1x1 JUN  
\*MAS DS 133M



**SOL BEL IND 6**  
\*MAS HM 110  
\*MAS 1x1 RAI



**SOL BEL GRA 6**  
\*MAS HM 150  
\*MAS GM 28



**SOL BEL COB 6**  
\*MAS HM 150  
\*MAS GM 82



**SOL BEL AZU 6**  
\*MAS DS 142M  
\*MAS 1x1 RAI



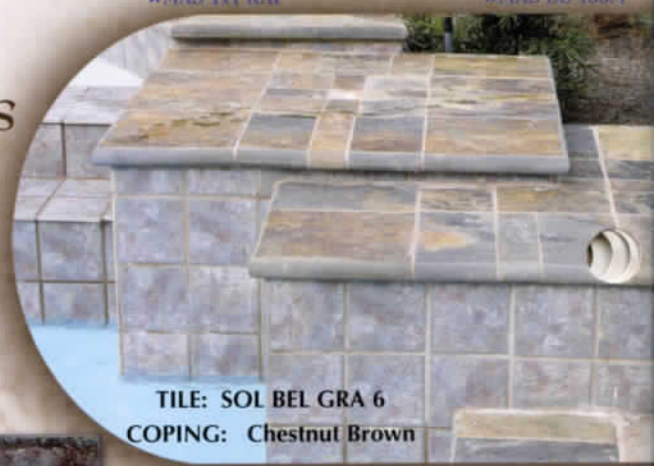
**SOL BEL GIA 6**  
\*MAS 1x1 JUN  
\*MAS DS 133M

# Tico Taco SERIES

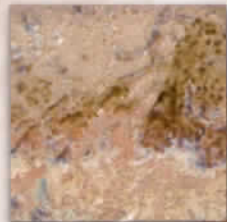
4 Pieces = 1 SF

\* Denotes corresponding step trim

*Expect shade variation*



**TILE: SOL BEL GRA 6**  
**COPING: Chestnut Brown**



**SAI TITA DOR 6**  
\*MAS HM 164  
\*MAS GM 28



**SAI TITA BLU 6**  
\*MAS HM 140  
\*MAS DS 142M



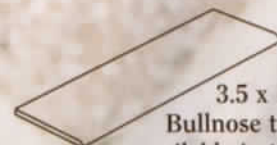
**SAI TITA ROS 6**  
\*MAS HM 164  
\*MAS GM 28



**TILE: SAI TITA BLU 6**



**SAI TITA GRI 6**  
\*MAS HM 150  
\*MAS GM 82



3.5 x 18  
Bullnose trim available in the Tico Taco Series!



4 Pieces = 1 SF

\* Denotes corresponding step trim

# Desert Canyon SERIES



MAS DS 630

\*MAS DS 133M / MAS GM 44



MAS DS 620

\*MAS HM 164 / MAS GM 22



MAS DS 610

\*MAS HM 164 / MAS GM 28

*Expect shade variation*



MAS DS 650

\*MAS DS 142M / MAS HM 140

TILE: MAS DS 650  
COPING: Chestnut Brown

1 Sheet = 1.05 SF

\* Denotes corresponding step trim

# Random SERIES



MAS RM 102

\*MAS DS 142M / MAS GM 77



MAS RM 104

\*MAS DS 171M / MAS GM 28



MAS RM 101

\*MAS HM 164 / MAS GM 28



MAS RM 103

\*MAS HM 162 / MAS DS 133M

*Expect shade variation*



TILE:  
MAS RM 104

Shade variations are an inherent characteristic of all kiln-fired ceramic tiles. Please inspect actual shade of tile before installation. Use constitutes acceptance.

# Rosetta SERIES

\* Denotes corresponding step trim

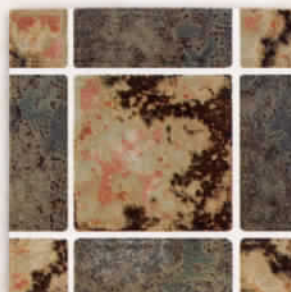
## Mosaic

1 Sheet = 1.05 SF



MAS SKN 1

\*MAS HM 166 / MAS DS 133M



MAS SKN 2

\*MAS 1x1 JUN / MAS GM 44



MAS SKN 3

\*MAS HM 140 / MAS GM 77

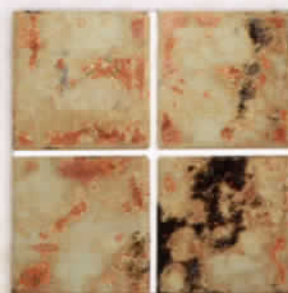
## 3x3

1 Sheet = 1.05 SF



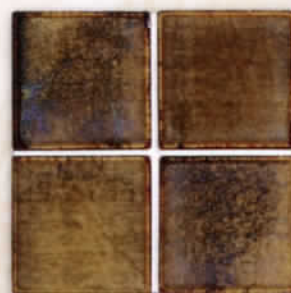
MAS SKN 10

\*MAS HM 166 / MAS DS 133M



MAS SKN 20

\*MAS HM 164 / MAS GM 21



MAS SKN 30

\*MAS HM 164 / MAS GM 28

## 6x6

4 Pieces = 1 SF



MAS SKNF 610

\*MAS HM 166 / MAS DS 133M



MAS SKNF 620

\*MAS HM 164 / MAS GM 21

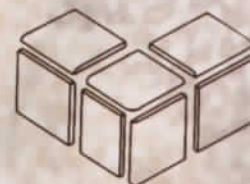


MAS SKNF 630

\*MAS HM 164 / MAS GM 28



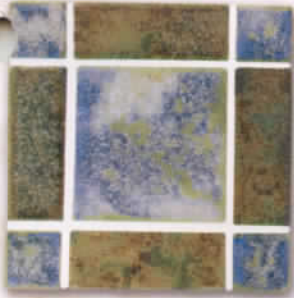
TILE: MAS SKN 10



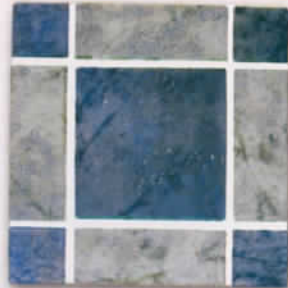
3x3 Surface Bullnose trim available in the Rosetta Series

# Rosetta SERIES

*\* Denotes corresponding step trim*



**MAS SKN 4**  
\*MAS 1x1 JUN / MAS DS 133M

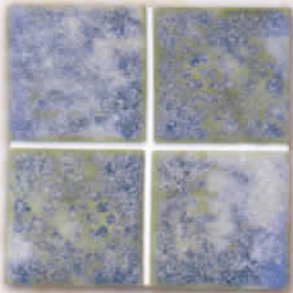


**MAS SKN 5**  
\*MAS 1x1 RAI / MAS GM 77



**MAS SKN 6**  
\*MAS 1x1 RAI / MAS GM 77

*Mosaic*  
1 Sheet = 1.05 SF



**MAS SKN 40**  
\*MAS 1x1 JUN / MAS DS 133M

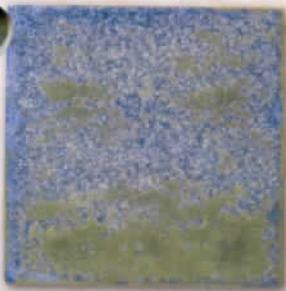


**MAS SKN 50**  
\*MAS 1x1 RAI / MAS GM 71



**MAS SKN 60**  
\*MAS 1x1 RAI / MAS GM 28

*3x3*  
1 Sheet = 1.05 SF



**MAS SKNF 640**  
\*MAS 1x1 JUN / MAS DS 133M

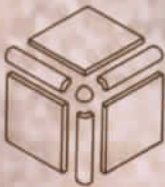


**MAS SKNF 650**  
\*MAS 1x1 RAI / MAS GM 71



**MAS SKNF 660**  
\*MAS 1x1 RAI / MAS GM 28

*6x6*  
4 Pieces = 1 SF



1x6 Quarter Round  
trim available in the  
Rosetta Series



TILE: MAS SKN 60

Shade variations are an inherent characteristic of all kiln-fired ceramic tiles. Please inspect actual shade of tile before installation. Use constitutes acceptance.

# Open Water SERIES

4 Pieces = 1 SF \* Denotes corresponding step trim



3x12 Bullnose trim available in the Open Water Series



FLK OPE FAL 6  
\*MAS HM 150 / MAS GM 82



FLK OPE MAL 6  
\*MAS DS 171M  
\*MAS GM 21



FLK OPE BRU 6  
\*MAS DS 171M / MAS GM 21

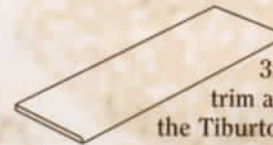
*Expect shade variation*



TILE: FLK OPE BRU 6  
COPING: Birch

# Tiburtone SERIES

4 Pieces = 1 SF \* Denotes corresponding step trim



3x12 Bullnose trim available in the Tiburtone Series



TILE: SAI TIB NOC 6



SAI TIB NOC 6  
\*MAS DS 171M / MAS GM 28



SAI TIB GRI 6  
\*MAS DS 171M / MAS GM 22

*Expect shade variation*



SAI TIB ROS 6  
\*MAS 1x1 SUN / MAS GM 60



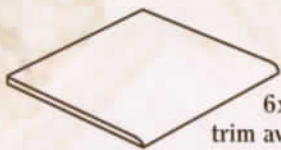
SAI TIB BIA 6  
\*MAS 1x1 CLO / MAS GM 22



SAI TIB ANT 6  
\*MAS DS 171M / MAS GM 28



SAI TIB BEI 6  
\*MAS 1x1 CLO / MAS GM 22



6x6 Bullnose  
trim available in the  
Sole Slate Series



# Sole Slate SERIES

4 Pieces = 1 SF \* Denotes corresponding step trim



SOL SLA GRE 6

\*MAS 1x1 JUN / MAS GM 44



SOL SLA GRE DECO

\*MAS 1x1 JUN / MAS GM 44



SOL SLA BEI 6

\*MAS 1x1 CLO / MAS GM 28



SOL SLA BEI DECO

\*MAS 1x1 CLO / MAS GM 28



SOL SLA BRU 6

\*MAS 1x1 SUN / MAS GM 60



SOL SLA BRU DECO

\*MAS 1x1 SUN / MAS GM 60



SOL SLA BLU 6

\*MAS 1x1 RAI / MAS GM 77



SOL SLA BLU DECO

\*MAS 1x1 RAI / MAS GM 77



SOL SLA GOL 6

\*MAS 1x1 HM 164 / MAS GM 22



SOL SLA GOL DECO

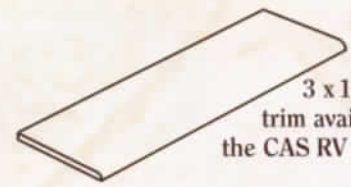
\*MAS 1x1 HM 164 / MAS GM 22

TILE: SOL SLA BLU 6 & Deco  
COPING: Noche Honed 4 x 12

Shade variations are an inherent characteristic of all kiln-fired ceramic tiles. Please inspect actual shade of tile before installation.  
Use constitutes acceptance.

# CAS RV SERIES

4 Pieces = 1 SF \* Denotes corresponding step trim



3 x 13 Bullnose trim available in the CAS RV Series



CAS RV BEI 6  
\*MAS 1x1 CLO  
\*MAS GM 22



CAS RV SIE 6  
\*MAS 1x1 SUN  
\*MAS GM 60



CAS RV NER 6  
\*MAS HM 150  
\*MAS GM 21



TILE: CAS RV PEA 6  
COPING: Riviera

*Expect shade variation*



CAS RV PEA 6  
\*MAS GM 22  
\*MAS DS 171M



CAS RV DIC  
\*MAS GM 21  
\*MAS GM 82

# Earthscapes SERIES

4 Pieces = 1 SF \* Denotes corresponding step trim



3 x 12 Bullnose trim available in the Earthscapes Series

*Expect shade variation*



MAS ES 03  
\*MAS DS 133M / MAS GM 28

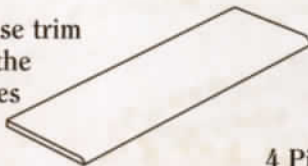


MAS ES 04  
\*MAS DS 142M / MAS GM 82



MAS ES 05  
\*MAS HM 164 / MAS DS 171M

3x12 Bullnose trim  
available in the  
Iridium Series



# Iridium SERIES

4 Pieces = 1 SF \* Denotes corresponding step trim



CER IRI BLU 6

\*MAS 1x1 RAI / MAS GM 71

*Expect  
shade  
variation*



CER IRI RUS 6

\*MAS 1x1 SUN / MAS GM 28



CER IRI NER 6

\*MAS PR 54 / MAS GM 21



CER IRI RED 6

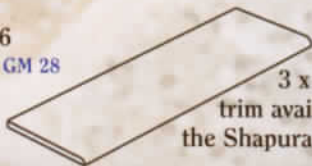
\*MAS 1x1 SUN / MAS GM 60



CER IRI GRE 6

\*MAS 1x1 JUN / MAS GM 28

3 x 12 Bullnose  
trim available in  
the Shapura Series



# Shapura SERIES

4 Pieces = 1 SF \* Denotes corresponding step trim



VAL SHA RAM 6

\*MAS HM 164 / MAS GM 28



VAL SHA EBA 6

\*MAS 1x1 SUN / MAS GM 60



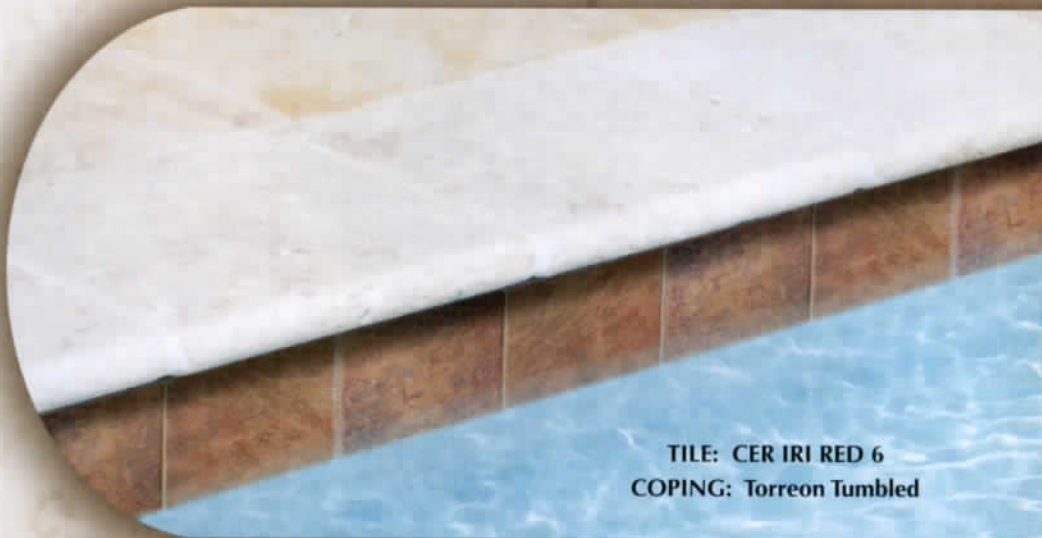
VAL SHA IND 6

\*MAS 1x1 SUN / MAS GM 60



VAL SHA MUS 6

\*MAS 1x1 JUN / MAS GM 44



TILE: CER IRI RED 6  
COPING: Torreon Tumbled



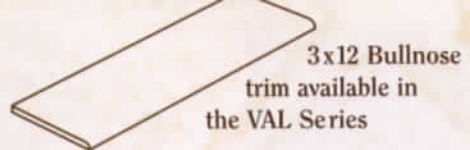
TILE: VAL SHA EBA 6

*Expect  
shade  
variation*

Shade variations are an inherent characteristic of all kiln-fired ceramic tiles. Please inspect actual shade of tile before installation.  
Use constitutes acceptance.

# VAL SERIES

4 Pieces = 1 SF \* Denotes corresponding step trim



*Expect shade variation*



VAL MIC BRO 6  
\*MAS HM 164  
\*MAS 1x1 SUN



VAL MIC GRA 6  
\*MAS HM 150  
\*MAS GM 82



VAL MIC COB 6  
\*MAS HM 150  
\*MAS GM 82



VAL MIC GIA 6  
\*MAS 1x1 JUN  
\*MAS GM 44

# Sandstone SERIES

4 Pieces = 1 SF \* Denotes corresponding step trim

3x12 Bullnose trim available in the Sandstone Series

*Expect shade variation*



VAL SAN COC 6  
\*MAS 1x1 SUN  
\*MAS GM 60



VAL SAN BLU 6  
\*MAS HM 150  
\*MAS GM 82



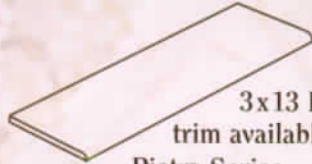
VAL SAN CLA 6  
\*MAS GM 21  
\*MAS 1x1 SUN



VAL SAN PEA 6  
\*MAS 1x1 SUN  
\*MAS HM 164







3x13 Bullnose trim available in the Pietra Series

# Pietra SERIES



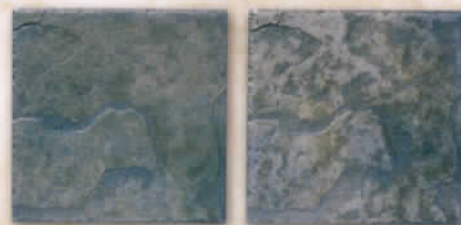
4 Pieces = 1 SF

\* Denotes corresponding step trim

*Expect shade variation*



FON PIE LAK 6  
\*MAS HM 164 / MAS GM 28



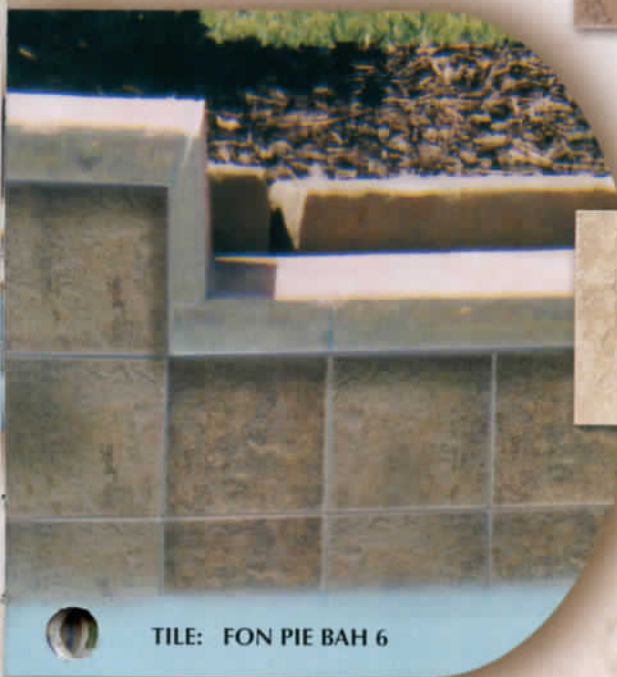
FON PIE BLU 6  
\*MAS DS 142M / MAS GM 82



FON PIE QUA 6  
\*MAS HM 164 / MAS GM 28



FON PIE BAH 6  
\*MAS 1x1 JUN / MAS GM 28



TILE: FON PIE BAH 6



# ITA SERIES

4 Pieces = 1 SF \* Denotes corresponding step trim

*Expect shade variation*



ITA CT ZIN 6  
\*MAS 1x1 CLO  
\*MAS GM 22



ITA CT ROD 6  
\*MAS HM 150  
\*MAS GM 82



ITA CT BRO 6  
\*MAS 1x1 SUN  
\*MAS GM 60



TILE: ITA CT ZIN 6  
COPING: Plantation Red

Shade variations are an inherent characteristic of all kiln-fired ceramic tiles. Please inspect actual shade of tile before installation. Use constitutes acceptance.

# Snake Skin SERIES

1 Sheet = 1 SF \* Denotes corresponding step trim



MAS SNA 74  
\*MAS 1x1 RAI / MAS HM 164



MAS SNA 87  
\*MAS DS 171M / MAS GM 28



MAS SNA 19  
\*MAS GM 22 / MAS 1x1 RAI



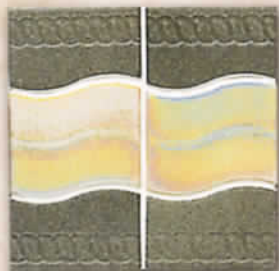
MAS SNA 57  
\*MAS GM 21 / MAS 1x1 SUN



TILE: MAS SNA 87

# Wave SERIES

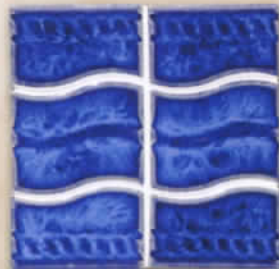
1 Sheet = 1.08 SF \* Denotes corresponding step trim



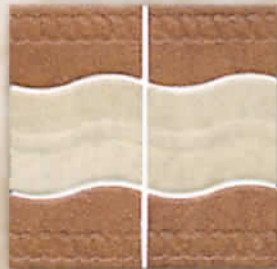
MAS WA 4  
\*MAS 1x1 JUN / MAS DS 133 M



MAS WA 10  
\*MAS 1x1 RAI / MAS GM 77



MAS WA 44K  
\*MAS HM 144 / MAS RE 244



MAS WA 7  
\*MAS 1x1 SUN / MAS GM 60

# Roman SERIES

1 Sheet = 1 SF \* Denotes corresponding step trim



MAS ROM 590  
\*MAS HM 110 / MAS HM 120



MAS ROM 64  
\*MAS GM 60 / MAS HM 16



TILE: MAS ROM 64

# Ridge Stone SERIES

1 Sheet = 1.05 SF

\* Denotes corresponding step trim



MAS RS 1  
\*MAS 1x1 RAI / MAS GM 77



MAS RS 5  
\*MAS DS 171M / MAS GM 21



MAS RS 6  
\*MAS 1x1 RAI / MAS DS 142M



MAS RS 2  
\*MAS 1x1 SUN / MAS GM 60



MAS RS 3  
\*MAS 1x1 JUN / MAS 1x1 SUN



MAS RS 4  
\*MAS 1x1 CLO / MAS DS 171M



TILE: MAS RS 5  
COPING: Torreon Stone Tumbled



# Lunar Stone SERIES

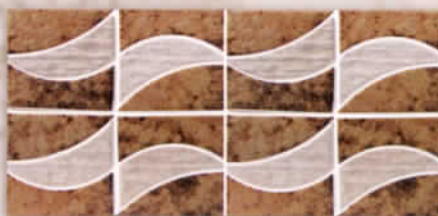
1 Sheet = 1.10 SF

\* Denotes corresponding step trim

# Rope SERIES



MAS ROP 4  
\*MAS 1 x 1 JUN / MAS DS 133M



MAS LS 3  
\*MAS 1x1 SUN / MAS GM 60



MAS LS 1  
\*MAS 1x1 RAI / MAS GM 77



TILE: MAS LS 3

Shade variations are an inherent characteristic of all kiln-fired ceramic tiles. Please inspect actual shade of tile before installation. Use constitutes acceptance.

# Listello Stone SERIES

1 Piece = .56 SF

\* Denotes corresponding step trim

Sold by the piece



MAS LS 386

\*MAS 1x1 JUN / MAS DS 133 M



MAS LS 382

\*MAS 1x1 RAI / MAS 1x1 SUN



MAS LS 379

\*MAS 1x1 RAI / MAS 1x1 CLO



TILE: MAS LS 379

COPING: Academy Gray

# Listello SERIES

1 Piece = .56 SF

\* Denotes corresponding step trim

Sold by the piece



MAS L 354 S

\*MAS HM 140 / MAS GM 77



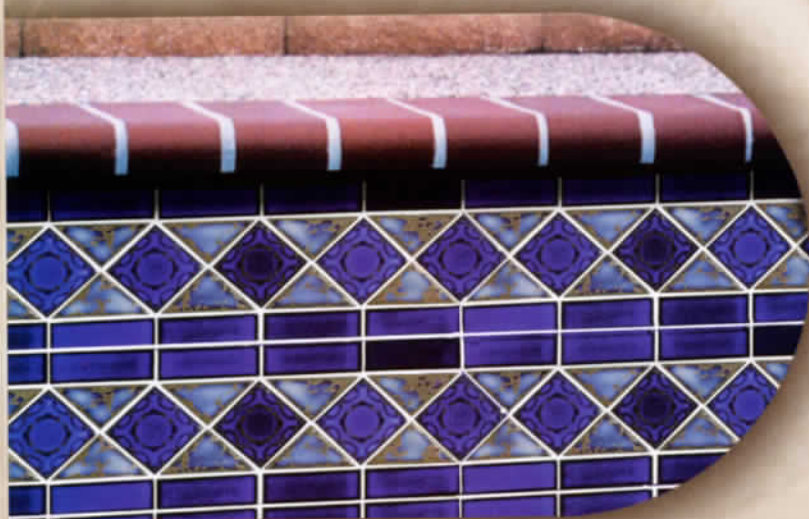
MAS L 435 S

\*MAS HM 110 / MAS HM 144



MAS L 240 S

\*MAS HM 106 / MAS HM 113



TILE: MAS L 240S

COPING: Burgundy

1 Sheet = 1.05 SF

\* Denotes corresponding step trim

# Marbleized SERIES



MAS M 320  
\*MAS HM 124  
\*MAS GM 77

MAS M 620



MAS M 340  
\*MAS DS 142 M  
\*MAS HM 140

MAS M 640



MAS M 330  
\*MAS 1x1 JUN  
\*MAS GM 44

MAS M 630

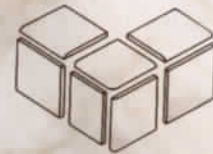


MAS M 310  
\*MAS DS 171M  
\*MAS GM 21

MAS M 610



TILE: MAS M 340 & M 640 (Deco)  
COPING: Shellstone



3x3 Bullnose  
trim available  
in the  
Marbleized  
Series

# Crystal Ice Akron SERIES

1 Sheet = 1.08 SF

\* Denotes corresponding step trim



MAS CI 304  
\*MAS HM 106  
\*MAS PR 22



MAS CI 301  
\*MAS HM 110  
\*MAS HM 106



MAS CI 4  
\*MAS HM 106 / MAS PR 22



MAS CI 7  
\*MAS HM 128 / MAS HM 110



TILE: MAS CI 7

Shade variations are an inherent characteristic of all kiln-fired ceramic tiles. Please inspect actual shade of tile before installation. Use constitutes acceptance.

1 Sheet = 1.07 SF

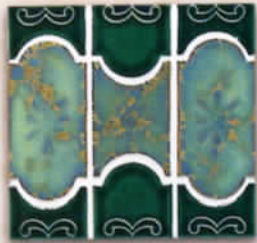
\* Denotes corresponding step trim

# Buenos SERIES



MAS BUE 22

\*MAS HM 120 / MAS HM 106



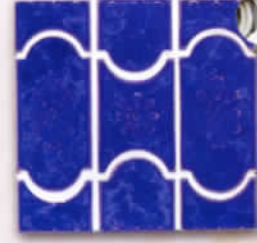
MAS BUE 37

\*MAS HM 122 / MAS HM 162



MAS BUE 40

\*MAS HM 140 / MAS GM 71



MAS BUE 44

\*MAS HM 144 / \*MAS RE 244



MAS BUE 240

\*MAS HM 106 / \*MAS HM 206



MAS BUE 244

\*MAS HM 106 / \*MAS HM 206



TILE: MAS BUE 244



MAS BUE 650

\*MAS 1x1 SUN / \*MAS 1x1 CLO



MAS BUE 640

\*MAS 1x1 RAI / \*MAS 1x1 CLO

# Mini Akron SERIES

1 Sheet = 1.05 SF

\* Denotes corresponding step trim



TILE: MAS MAK 2440 S



MAS MAK 3320 S

\*MAS HM 142  
\*MAS RE 242



MAS MAK 7430 S

\*MAS HM 140



MAS MAK 2440 S

\*MAS HM 113 / MAS HM 213



MAS MAK 991

\*MAS HM 144 / MAS RE 244

# Diamond Reflection SERIES



1 Sheet = 1.05 SF

\* Denotes corresponding step trim



MAS DR 334 S  
\*MAS HM 142  
\*MAS RE 242



MAS DR 534 S  
\*MAS HM 144  
\*MAS HM 120

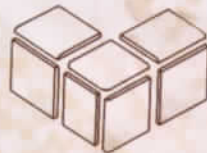
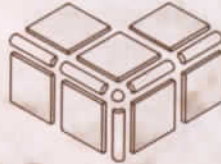


MAS DR 223 S  
\*MAS HM 142  
\*MAS RE 241



MAS DR 641 S  
\*MAS HM 144  
\*MAS RE 244

1x3 Quarter Round trim available in the Diamond Reflection Series and 3x3 Reflection Series



3x3 Surface Bullnose trim available in the Diamond Reflection Series and 3x3 Reflection Series



TILE: MAS DR 534 S  
COPING: Imperial Red

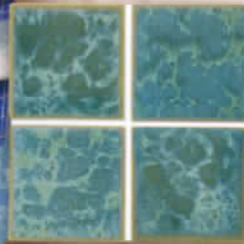
# 3x3 Reflection SERIES

1 Sheet = 1.05 SF

\* Denotes corresponding step trim



TILE: MAS RE 344  
COPING: Shellstone



MAS RE 341  
\*MAS RE 241  
\*MAS HM 162



MAS RE 343  
\*MAS HM 124



MAS RE 344  
\*MAS HM 144  
\*MAS RE 244

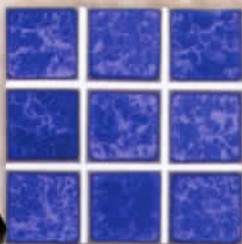


MAS RE 342  
\*MAS HM 142  
\*MAS RE 242

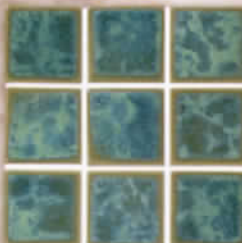
1 Sheet = 1.08 SF

\* Denotes corresponding step trim

# 2x2 Reflection SERIES



MAS RE 244  
\*MAS HM 144



MAS RE 241  
\*MAS HM 162



MAS RE 242  
\*MAS HM 142



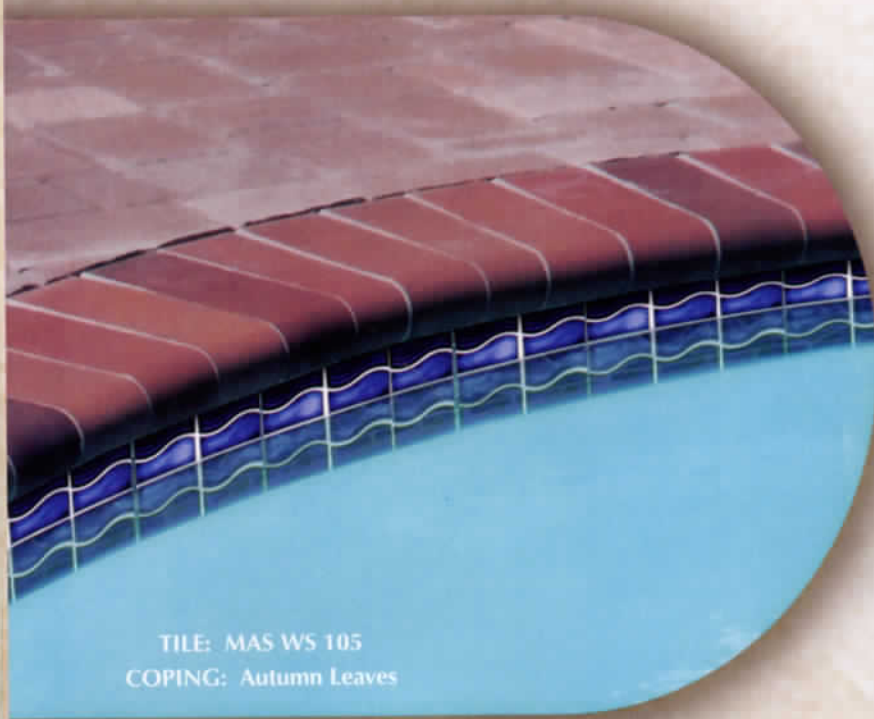
TILE: MAS RE 242  
COPING: Torreon Tumbled

Shade variations are an inherent characteristic of all kiln-fired ceramic tiles. Please inspect actual shade of tile before installation. Use constitutes acceptance.

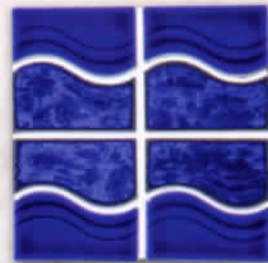
# Waterside SERIES

1 Sheet = 1.05 SF

\* Denotes corresponding step trim



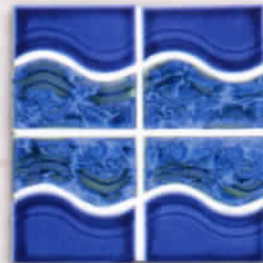
TILE: MAS WS 105  
COPING: Autumn Leaves



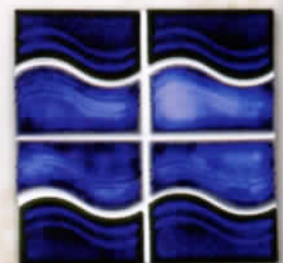
MAS WS 252  
\*MAS HM 110 / MAS RE 244



MAS WS 2440 S  
\*MAS HM 106 / MAS HM 113

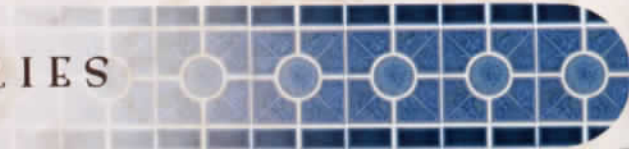


MAS WS 253  
\*MAS HM 140 / MAS HM 144



MAS WS 105  
\*MAS HM 106 / MAS HM 206

# Sun SERIES



1 Sheet = 1.03 SF \* Denotes corresponding step trim



MAS SU 650  
\*MAS HM 110  
\*MAS HM 144



MAS SU 652  
\*MAS HM 166



MAS SU 630  
\*MAS HM 106  
\*MAS HM 206

# Sunburst SERIES



1 Sheet = .98 SF \* Denotes corresponding step trim



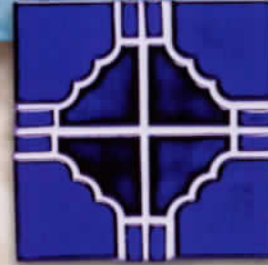
MAS STB 819  
\*MAS HM 113 / MAS HM 210



MAS STB 807  
\*MAS HM 113 / MAS HM 213



MAS STB 44  
\*MAS HM 144 / MAS RE 244



MAS STB 808  
\*MAS HM 106 / MAS HM 206



TILE: MAS STB 819  
COPING: Cherokee Red



# OS SERIES

4 Pieces = 1 SF \* Denotes corresponding step trim



6x6 Bullnose trim  
available in the OS Series



MAS OS 95  
\*MAS HM 140



MAS OS 41  
\*MAS HM 124



MAS OS 32  
\*MAS HM 110



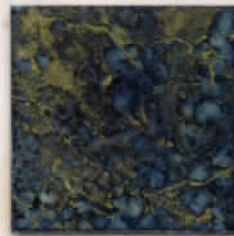
TILE: MAS OS 32

# Crystal SERIES

4 Pieces = 1 SF \* Denotes corresponding step trim



6x6 Bullnose trim  
available in the Crystal Series



SOL CRY GRE 6  
\*MAS HM 128  
\*MAS HM 142



SOL CRY GB DEC



SOL CRY BRO 6  
\*MAS PR 54  
\*MAS GM 21



SOL CRY CHA 6  
\*MAS HM 109  
\*MAS GM 82



SOL CRY BB DEC



SOL CRY BLU 6  
\*MAS HM 110  
\*MAS HM 106



TILE: SOL CRY BLU 6 &  
SOL CRY BB DEC

4 Pieces = 1 SF \* Denotes corresponding step trim

# Antille SERIES



6x6 Bullnose  
trim available in  
the Antille Series



SOL ANT AQU 6  
\*MAS HM 142



SOL ANT BLU 6  
\*MAS HM 106  
\*MAS HM 144



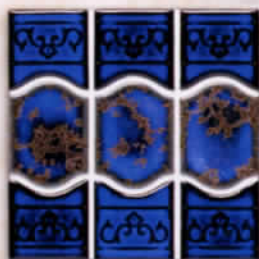
TILE: SOL ANT AQU 6

Shade variations are an inherent characteristic of all kiln-fired ceramic tiles. Please inspect actual shade of tile before installation. Use constitutes acceptance.

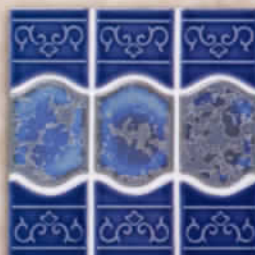
# Sea Bluff SERIES



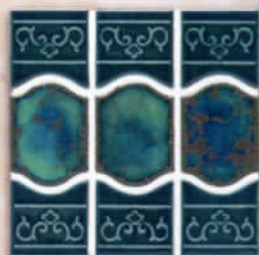
MAS MBL 805  
\*MAS HM 144 / MAS HM 110



MAS MBL 806  
\*MAS HM 106 / MAS HM 113



MAS MBL 907  
\*MAS HM 140 / MAS 1x1 RAI

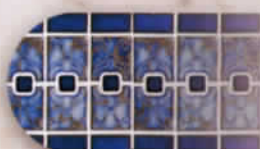


MAS MBL 909  
\*MAS HM 162

1 Sheet = 1.05 SF \* Denotes corresponding step trim



TILE: MAS MBL 909



# Luciana SERIES

1 Sheet = 1.15 SF \* Denotes corresponding step trim



TILE: MAS LC 4141 COPING: Havana Red



MAS LC 4141  
\*MAS HM 110



MAS LC 2440 S  
\*MAS HM 113 / MAS HM 106

# Aqua SERIES

1 Sheet = 1.02 SF \* Denotes corresponding step trim



TILE: MAS DPQ 30  
COPING: Imperial Red



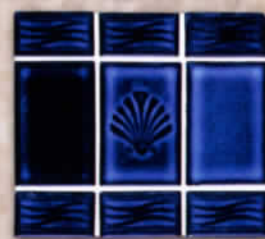
MAS DPQ 30  
\*MAS HM 106 / MAS HM 113

# Shell SERIES

1 Sheet = 1.15 SF \* Denotes corresponding step trim



MAS SL 60  
\*MAS HM 110  
\*MAS HM 210



MAS SL 30  
\*MAS HM 106  
\*MAS HM 206

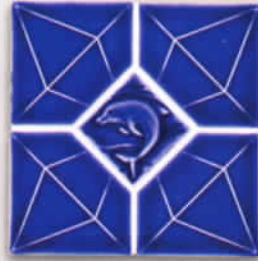
# Diamond SERIES

1 Sheet = 1.08 SF

\*Denotes corresponding step trim



MAS DA 30  
\*MAS HM 106 / MAS HM 206



MAS DA 190  
\*MAS HM 110 / MAS HM 210

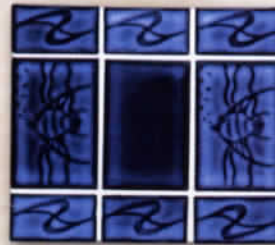


TILE: MAS DA 190  
COPING: Burgundy

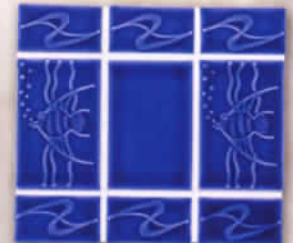
# Angel Fish SERIES

1 Sheet = 1.15 SF

\* Denotes corresponding step trim



MAS AG 30  
\*MAS HM 106 / MAS HM 206



MAS AG 60  
\*MAS HM 110 / MAS HM 210



TILE: MAS AG 30

# Double Dolphin SERIES

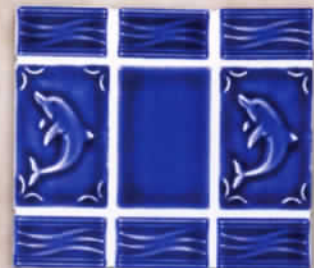
1 Sheet = 1 SF \* Denotes corresponding step trim



MAS DD 710  
\*MAS DS 133 M

# Dolphin SERIES

1 Sheet = 1.15 SF \* Denotes corresponding step trim



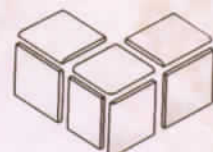
MAS DP 60  
\*MAS HM 110 / MAS HM 210

Shade variations are an inherent characteristic of all kiln-fired ceramic tiles. Please inspect actual shade of tile before installation. Use constitutes acceptance.

# Stone SERIES



3 x 3 Surface Bullnose  
trim available in  
the Stone Series



1 Sheet = 1.08 SF \* Denotes corresponding step trim



MAS ST 378 K  
\*MAS 1x1 RAI  
\*MAS GM 77



MAS ST 382 K  
\*MAS HM 164  
\*MAS 1x1 SUN



MAS ST 379 K  
\*MAS 1x1CLO  
\*MAS GM 22



MAS ST 385 K  
\*MAS 1x1 JUN  
\*MAS HM 109



MAS ST 386 K  
\*MAS 1x1 JUN  
\*MAS GM 44



TILE: MAS ST 378K  
COPING: Academy Gray



# Flagstone SERIES

1 Sheet = 1.08 SF \* Denotes corresponding step trim

MAS FL 340  
\*MAS GM 21  
\*MAS DS 171M



MAS FL 360  
\*MAS HM 162  
\*MAS GM 44

# Diamond Stone SERIES



1 Sheet = 1.08 SF \* Denotes corresponding step trim



MAS DA 378 K  
\*MAS 1x1 RAI  
\*MAS GM 77



MAS DA 378 SK  
\*MAS 1x1 RAI  
\*MAS 1x1 CLO



MAS DA 377 K  
\*MAS HM 164  
\*MAS 1x1 SUN



TILE: MAS DA 377K  
COPING: Noche Tumbled



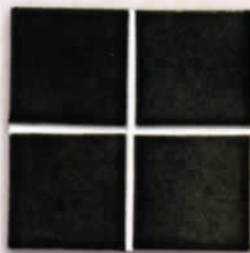
# Shadow SERIES

1 Sheet = 1.08 SF

\* Denotes corresponding step trim



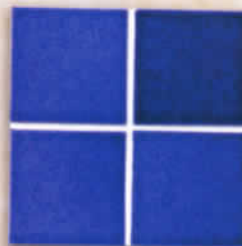
3 x 3 Surface Bullnose trim  
available in the Shadow Series



MAS SH 361 K  
\*MAS HM 109



MAS SH 366 K  
\*MAS HM 166



MAS SH 360 K  
\*MAS HM 110



MAS IS 90  
\*MAS HM 124  
\*MAS 1x1 CLO



TILE: MAS IS 90 COPING: Chino

# 6x6 Field SERIES

4 Pieces = 1 SF

\* Denotes corresponding step trim



6x6 Bullnose trim available  
in the 6x6 Field Series



MAS K 620  
\*MAS HM 110



MAS K 625  
\*MAS HM 124



MAS K 693  
\*MAS HM 122



MAS K 646  
\*MAS HM 140



MAS K 669  
\*MAS HM 109

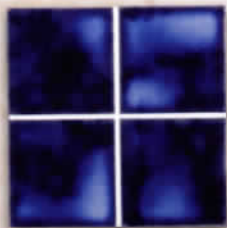


TILE: MAS K 669  
COPING: Shellstone

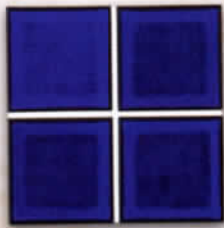
Shade variations are an inherent characteristic of all kiln-fired ceramic tiles. Please inspect actual shade of tile before installation.  
Use constitutes acceptance.

# Harmony 300 SERIES 3x3

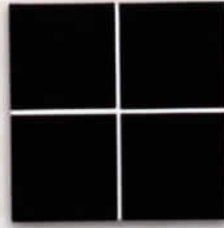
1 Sheet = 1.05 SF \* Denotes corresponding step trim



MAS HM 305  
\*MAS HM 106  
\*MAS HM 205

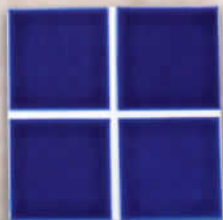
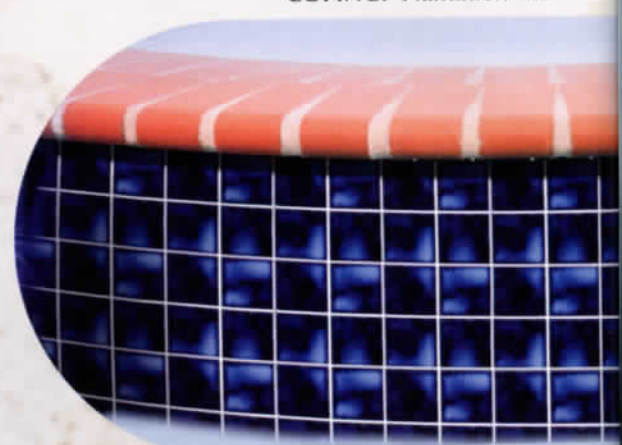


MAS HM 306  
\*MAS HM 106  
\*MAS HM 206

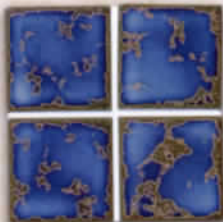


MAS HM 309  
\*MAS HM 109  
\*MAS HM 209

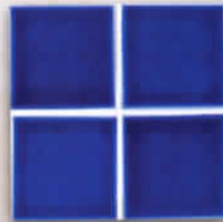
TILE: MAS HM 305  
COPING: Plantation Red



MAS HM 310  
\*MAS HM 110  
\*MAS HM 210



MAS HM 313  
\*MAS HM 113  
\*MAS HM 213



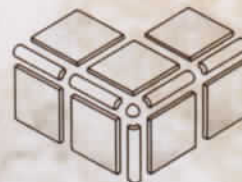
MAS HM 320  
\*MAS HM 120



MAS HM 322  
\*MAS HM 122

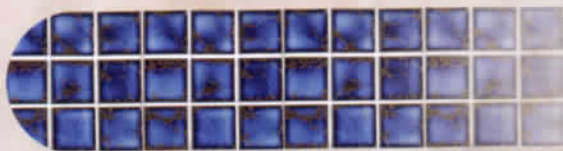
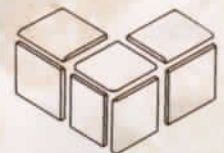


MAS HM 340  
\*MAS HM 140



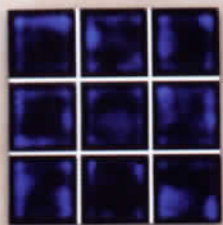
1x3 Quarter Round  
trim available in the  
Harmony 300 Series

3x3 Surface Bullnose  
trim available in the  
Harmony 300 Series

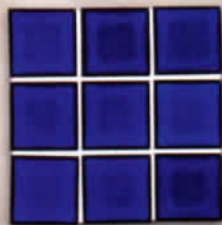


# Harmony 200 SERIES 2x2

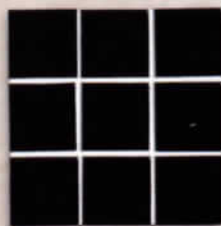
1 Sheet = 1.08 SF \* Denotes corresponding step trim



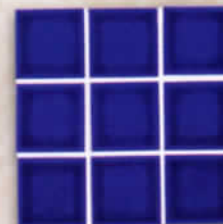
MAS HM 205  
\*MAS HM 106



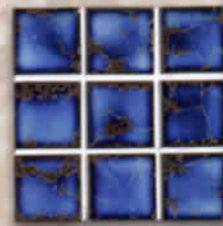
MAS HM 206  
\*MAS HM 106



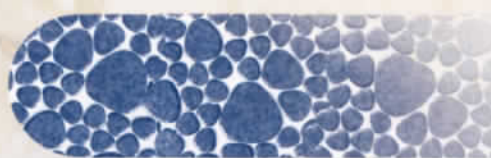
MAS HM 209  
\*MAS HM 109



MAS HM 210  
\*MAS HM 110



MAS HM 213  
\*MAS HM 113



# Earth Stone Pebble SERIES

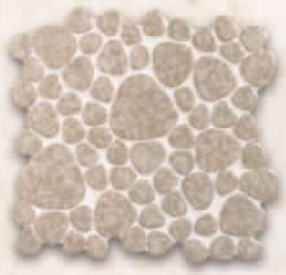
1 Sheet = .80 SF



MAS EAR 2



MAS EAR 3



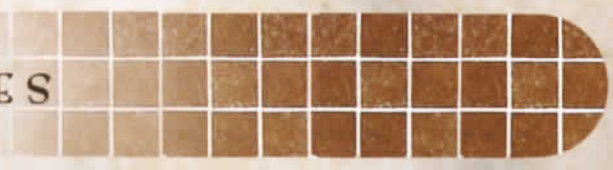
MAS EAR 4



MAS EAR 5

## 2x2 Granitone SERIES

1 Sheet = .97 SF



MAS GM 21



MAS GM 22



MAS GM 28



MAS GM 44



MAS GM 60



MAS GM 71



MAS GM 77



MAS GM 82

## 2x2 Sparkle SERIES

1 Sheet = 1.05 SF



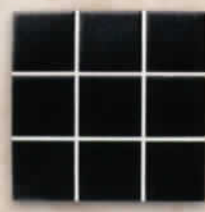
MAS 2x2 N23

## 2x2 Unglazed SERIES

1 Sheet = .97 SF



MAS 2 x 2 BLU UNG



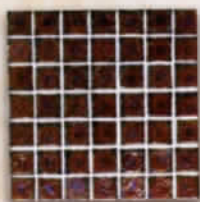
MAS 2 x 2 BLA UNG

Shade variations are an inherent characteristic of all kiln-fired ceramic tiles. Please inspect actual shade of tile before installation. Use constitutes acceptance.

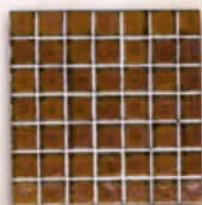
# Il Vietri SERIES (Class 1x1)

1 Sheet = 1 SF

Should be set with white latex modified thinset.



INT ILV BUR AMB 3/4



INT ILV HON AMB 3/4



INT ILV LAP BLU 3/4



INT ILV SEA BLU 3/4

TILE: INT ILV HON AMB 3/4

# Harmony 100 SERIES

1 Sheet = 1 SF

1x1



MAS HM 106



MAS HM 109



MAS HM 110



MAS HM 113



MAS HM 120



MAS HM 122



MAS HM 124



MAS HM 140



MAS HM 142



MAS HM 144



MAS HM 150



MAS HM 162



MAS HM 164



MAS HM 166

# Shoreline 1x1 SERIES

1 Sheet = 1 SF



MAS 1x1 RAI



MAS 1x1 SUN



MAS 1x1 CLO



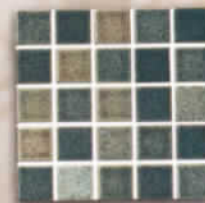
MAS 1x1 JUN

# Desert SERIES

1 Sheet = 1 SF



MAS DS 142 M



MAS DS 133 M



MAS DS 171 M



1 Sheet = 1.08 SF

\* Denotes corresponding step trim



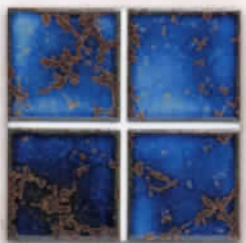
# 3x3 Field SERIES



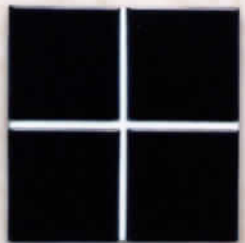
MAS 3x3 COB BLU  
\*MAS HM 106 / MAS HM 206



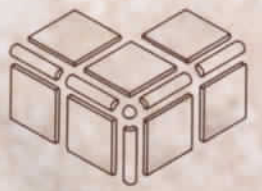
MAS 3x3 FOR GRE  
\*MAS HM 122



MAS 3x3 TER BLU  
\*MAS HM 113 / MAS HM 213



MAS 3x3 BLA  
\*MAS HM 109 / MAS HM 209



1x3 Quarter Round trim available in the 3x3 Field Series

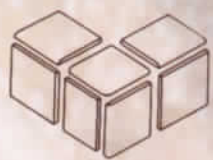


MAS 3x3 TEA  
\*MAS HM 128



MAS 3x3 SMO BLU  
\*MAS HM 140

3x3 Surface Bullnose trim available in the 3x3 Field Series



MAS CRB 61  
\*MAS HM 120



MAS CRB 68  
\*MAS HM 110



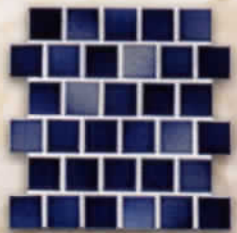
TILE: MAS 3x3 SMO BLU  
COPING: Academy Gray

# Mix SERIES 1x1

1 Sheet = 1 SF

# Penny Round SERIES

1 Sheet = 1.06 SF



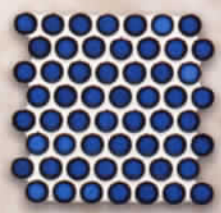
MAS MIX 1



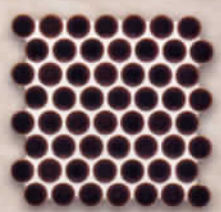
MAS MIX 3



MAS MIX 2



MAS PR 22



MAS PR 54



TILE: MAS PR 54

Shade variations are an inherent characteristic of all kiln-fired ceramic tiles. Please inspect actual shade of tile before installation. Use constitutes acceptance.

# Water Features

Lion & Venetian Sconce:  
Laguna Blue

## DOLPHINS



Golden Cream

Laguna Blue

Antique Verde

New Bronze



## CLASSIC DOME



Golden Cream

Laguna Blue

New Bronze

Antique Verde

Golden Cream

Laguna Blue

Antique Verde

## FLEURETTE



Golden Cream

Laguna Blue

New Bronze

Antique Verde

## CLASSIC PALM



New Bronze

## LION



Golden Cream

Laguna Blue

New Bronze

Antique Verde

## VENETIAN SCONCE



Golden Cream



Laguna Blue



New Bronze



Antique Verde

# Frost-Proof Trim Tile

2 Pieces = 1 LF

## Slip Resistant

Available in  
Select Colors



MAS A  
4200  
GVT 90

MAS A  
4200  
GVT 92



Hand Hold  
Available in  
Select Colors

## Shiny Finish



MAS A  
4200  
GVT 22

MAS A  
4200  
GVT 76

MAS A  
4200  
GVT 77

MAS A  
4200  
GVT 89

MAS A  
4200  
GVT 95

## Matte Finish



MAS A  
4200  
GVT 50

MAS A  
4200  
GVT 51

MAS A  
4200  
GVT 52

MAS A  
4200  
GVT 53

MAS A  
4200  
GVT 54

MAS A  
4200  
GVT 55

MAS A  
4200  
GVT 56

MAS A  
4200  
GVT 57

# Dry Treat Sealers

ENHANCE-PLUS is a penetrating and breathable sealer used to enrich and enhance the color of natural stone, pavers and natural stone tile. Follow application instructions.



STAIN-PROOF is an invisible and breathable sealer suitable for all natural stone, pavers and natural stone tile. Guards against surface staining, retains existing color and finish, and guards against salt attack. Ideal for indoor and outdoor use on natural stone decks and pool coping. STAIN-PROOF also available in ACETONE, which will darken some stones. Follow application instructions.

DRY-TREAT 40SK is an impregnating sealer used to consolidate and strengthen surfaces and repel water. Protects stone surfaces from water penetration and salt damage. Follow application instructions.



All Natural Stones must be sealed. (See page 35). Sealing is an absolute MUST to guard against salt attack on pools

# Natural Stone

## TORREON STONE HONED



Torreon Stone Honed



12 x 18  
Double  
Bullnose  
Coping

12 x 12 Tile  
16 x 16 Tile

12 x 12  
Coping

4 x 12 Coping

12 x 24  
Bullnose  
Coping

Freeze-Thaw Warning: Torreon Stone-Tumbled not recommended for climates where severe freeze-thaw cycles are experienced

## TORREON STONE TUMBLED



12 x 12  
Coping

6 x 6 Tile

12 x 24  
Coping

3 x 3 Tile

4 x 12 Coping

12 x 12 Tile  
16 x 16 Tile

## NOCHE FILLED & HONED



TILE: SAI TITA GRI 6  
COPING: Noche Tumbled



12 x 12  
Coping

12 x 12 Tile  
16 x 16 Tile

4 x 12 Coping

12 x 24  
Coping

## NOCHE TUMBLED



12 x 12  
Coping

3 x 3 Tile

12 x 24  
Coping

12 x 12 Tile  
16 x 16 Tile

6 x 6 Tile

4 x 12  
Coping

Freeze-Thaw Warning: Noche-Tumbled not recommended for climates where severe freeze-thaw cycles are experienced

All Natural Stones must be sealed. (See page 35). Sealing will prevent water penetration that can affect the durability of the stone. Water penetration can also damage the material in freezing conditions.

**Natural Stone** coping and deck tiles are available in seven beautiful colors. They are available in various sizes of coping and paving tiles. They are ideal for interior as well as exterior uses. As with any natural stone, slight imperfections in color, size and shape are to be expected. We strongly recommend inspection before installation. Use constitutes acceptance.



12 x 24  
Coping

12 x 12  
Coping

**SIENNA GOLD  
HONED**



4 x 12 Coping



12 x 12 Tile  
18 x 18 Tile

*Expect shade  
variation*



12 x 12  
Coping

**SIENNA GOLD  
TUMBLED**

4 x 12 Coping



12 x 12 Tile  
18 x 18 Tile



Sienna Gold Honed

12 x 24  
Coping

**SHELLSTONE**

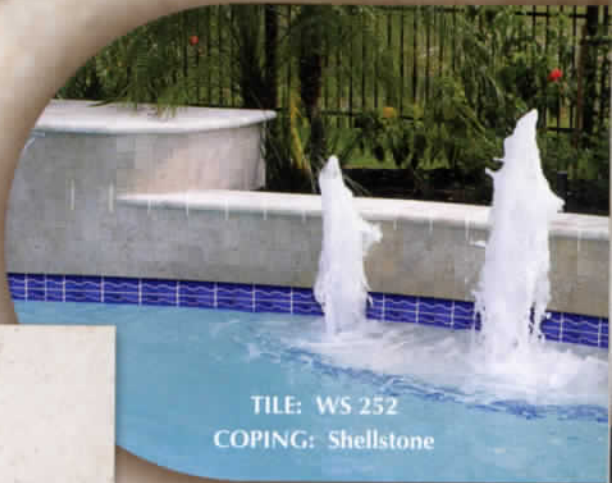
12 x 18  
Double Bullnose  
Coping

12 x 12 Tile  
16 x 16 Tile

12 x 12  
Coping

4 x 12 Coping

12 x 24  
Coping



TILE: WS 252  
COPING: Shellstone

**Freeze-Thaw Warning:** Shellstone not recommended for climates where severe freeze-thaw cycles are experienced.

**Natural Stone Pavers**

A chiseled edge gives these natural stone pavers a beautiful rustic appearance. They can be installed over concrete decking or used in a sand set method. Sand setting reduces installation cost and minimizes the effects of deck movement. Natural Stone Pavers size: 6" x 12" x 1 1/2". Expect variations in shading. We strongly recommend inspection before installation. Use constitutes acceptance.



Walnut



Bizantium  
Gold



Ivory  
Rustic

As with any natural stone, expect slight imperfections in size, shape and color. Inspection is recommended before installation. Use constitutes acceptance.

# Natural Slate Coping & Deck Tile

12x12  
Coping



12x24  
Coping

RIVIERA

4x12  
Coping



12x12 Tile  
18x18 Tile



Example of Riviera  
Color Range

12x12  
Coping



12x24  
Coping

INDIAN  
SUNSET

4x12  
Coping



12x12 Tile  
18x18 Tile



Example of Indian Sunset  
Color Range

12x12  
Coping



12x24  
Coping

GOLD  
RIVER

4x12  
Coping



12x12 Tile  
16x16 Tile

6x6  
Tile



Example of Gold River  
Color Range



TILE: SAI SPA BIA & Deco

COPING: Riviera

All slate products must be sealed (see page 35).

Sealing will prevent water penetration that can affect the durability of the stone. Water penetration can also damage the material in freezing conditions.

Sealing is an absolute **MUST** to guard against salt attack on pools.

All slate products must be sealed (see page 35). Sealing will prevent water penetration that can affect the durability of the stone. Water penetration can also damage the material in freezing conditions.

**Natural Slate** has a texture and range of color unlike any other natural stone. Slate combines beautifully with other natural materials and is an excellent choice for exterior applications. It is available in a variety of colors and sizes for decking applications. As with any natural stone, expect slight imperfections in size and shape. Wide ranges in color enhance slate's natural beauty, as no two pieces are alike. We strongly recommend inspection before installation. Use constitutes acceptance. Some flaking of slate should be expected after installation. Condition will lessen over time.

## GOLDEN PLAINS

6x6 Tile 12x12 Tile  
18x18 Tile



Random Flagstone Slate  
Example of Golden Plains Color Range



Ashlar Mosaic

## CHESTNUT BROWN

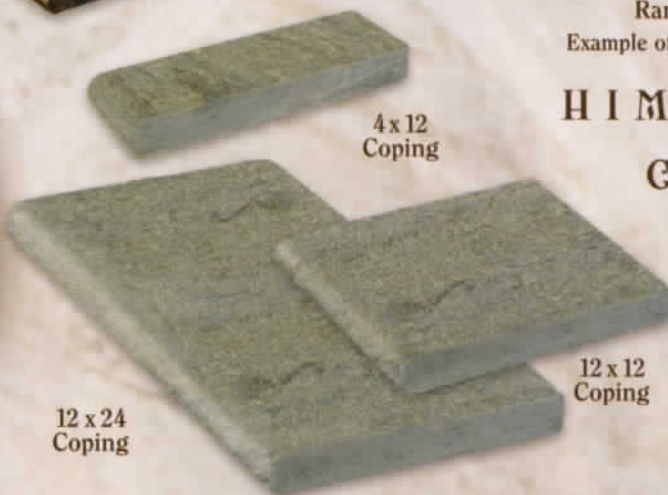
6x6 Tile  
12x12 Tile  
18x18 Tile



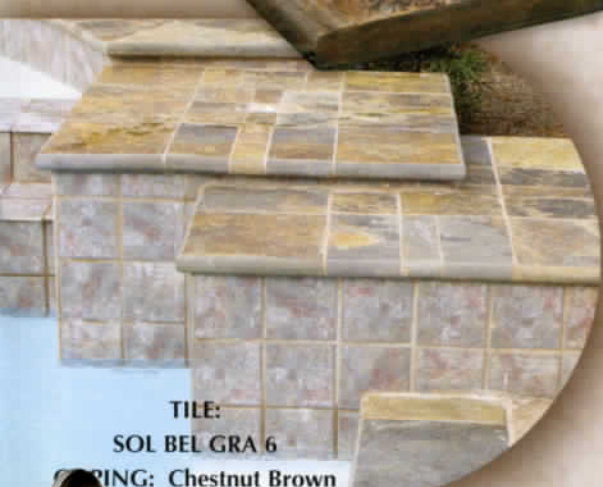
Random Flagstone Slate  
Example of Chestnut Brown Color Range

## HIMALAYAN GREEN

4x12 Copping



12x12 Tile  
18x18 Tile



As with any natural stone, expect slight imperfections in size, shape and color. Inspection is recommended before installation. Use constitutes acceptance.

# Pool Coping Brick

This series is the Cadillac of all coping brick. Smooth, rounded edges give that distinct look of perfection.

Available in 8" and 12" Coping and a 1/2" Paver



FLORIDA  
BRICK & CLAY

\* Freeze-Thaw Warning: Cadet Gray, Birch & Bone are not recommended for climates where severe freeze-thaw cycles are experienced.

## FLORIDA BRICK & CLAY RETRO



This 3/4" thick coping brick is an excellent option for pool remodeling or for installation on new fiberglass pools.

\* Freeze-Thaw Warning: Birch & Bone are not recommended for climates where severe freeze-thaw cycles are experienced.

## MARION CERAMICS



This line features a rolled cushion edge that provides a clean, precision look with no sharp edges.

Available in 9" and 12" Coping and a 2 1/4" and 1/2" Paver

## MUTUAL MATERIALS

Available in 9" and 12" Coping, 2 1/4" Paver and 1" Paver.

1" Paver not available in Ebony



## SAFETY GRIP COPING



WWW.MASTERTILEPOOL.COM

Shade variations are an inherent characteristic of all kiln-fired clay brick. This variation enhances its natural beauty. Please inspect actual shade of brick before installation. Use constitutes acceptance.



# TexRite.

Nu-Deck is a polymer modified Portland cement based decorative coating, designed to enhance the appearance of any concrete surface. The product can be sprayed on and knocked down to provide a textured finish. It can also be trowel applied over stencils or carved to give the deck a stone, tile, or brick look.



#303  
Cinnabar



#300  
Creamy Malt



#305  
Graystone



#301  
Sand Beige



#302  
Saddle Brown



#304  
Slate Gray

## KRYSTALKRETE

EXPOSED AGGREGATE POOL FINISH

Krystal Krete is an exposed aggregate pool finish from CL Industries. This advanced formulation of polymer enriched Portland cement and natural quartz improve depth perception and resist harsh pool chemicals, all while providing a comfortable, slip resistant finish.



Blue Pepper



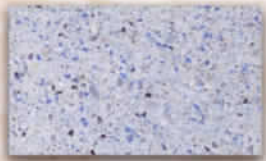
French Gray



Midnight Blue



Krystal Blue



Tahoe Blue



Teal



Verde



Ebony

**6 FT IN**

## Depth Markers

Master Tile stocks a complete line of depth marker tiles in both a glazed finish for the water line as well as a non-skid finish for pool decks.

## Class Block



## Polaris Power Fall

Available in 12" to 60" lengths with standard or extended lip



4 x 8



8 x 8



6 x 6

Shade variations are an inherent characteristic of all kiln-fired ceramic tiles. Please inspect actual shade of tile before installation. Use constitutes acceptance.

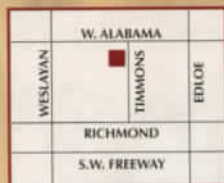
## Houston Area

### POOL DIVISION



12614 Hempstead Hwy.  
Houston, TX 77092  
Ph: 713-300-3700  
Fax: 713-300-3710  
888-647-8453 Toll Free

### INSIDE LOOP



3701 W. Alabama, Suite 160  
Houston, TX 77027  
Ph: 713-963-0084  
Fax: 713-963-0189

### GULF FREEWAY



12405 Fuquia  
Houston, TX 77034  
Ph: 281-464-6700  
Fax: 281-464-6900

### SUGARLAND



4755 Alpine, Suite 150  
Stafford, TX 77477  
Ph: 281-277-8686  
Fax: 281-277-8688

### NORTH HOUSTON



100 Cypresswood Dr., Suite 1400  
Spring, TX 77388  
Ph: 281-350-3030  
Fax: 281-350-3047

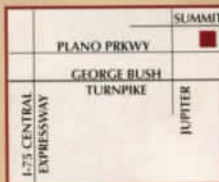
## Dallas / Fort Worth Area

### POOL DIVISION



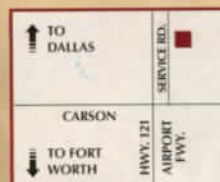
2230 LBJ Freeway, Suite 100  
Dallas, TX 75234  
Ph: 972-484-9777  
Fax: 972-484-9594  
888-461-8453 Toll Free

### PLANO



2700 Summit Ave., Suite 200  
Plano, TX 75074  
Ph: 972-633-0300  
Fax: 972-633-8881

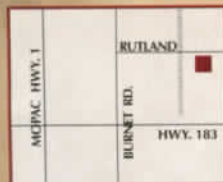
### FORT WORTH



6312 Airport Freeway  
Haltom City, TX 76117  
Ph: 817-831-6222  
Fax: 817-831-3888

## Other Locations

### AUSTIN



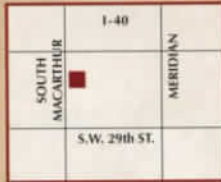
2209 A Rutland Dr., Suite 400  
Austin, TX 78758  
Ph: 512-836-7700  
Fax: 512-836-7737  
877-390-8453 Toll Free

### SAN ANTONIO



12879 Wetmore Rd.  
San Antonio, TX 78247  
Ph: 210-403-2600  
Fax: 210-403-2090  
877-413-8453 Toll Free

### OKLAHOMA CITY



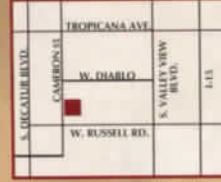
1412 S. MacArthur  
Oklahoma City, OK 73128  
Ph: 405-946-9300  
Fax: 405-946-6384

### TULSA



5024 S. Mingo Rd., Suite B  
Tulsa, OK 74145  
Ph: 918-622-3770  
Fax: 918-622-3777

### LAS VEGAS



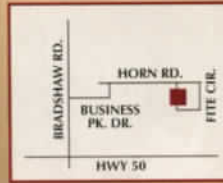
5550 Cameron Rd., Suite D  
Las Vegas, NV 89118  
Ph: 702-220-8455  
Fax: 702-220-9755  
800-291-5135 Toll Free

### ANAHEIM



1222 E. Howell Ave.  
Anaheim, CA 92805  
Ph: 714-712-8210  
Fax: 714-978-1398  
800-561-4225 Toll Free

### SACRAMENTO



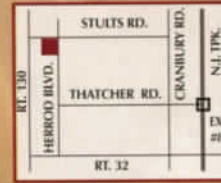
3170 Fite Circle  
Sacramento, CA 95827  
Ph: 916-854-9800  
Fax: 916-854-9808  
800-554-1220 Toll Free

### TAMPA



4925 Distribution Dr.  
Tampa, FL 33605  
Ph: 813-248-2200  
Fax: 813-248-2207  
866-481-8453 Toll Free

### NEW JERSEY



181 Herrod Blvd., Suite 4  
Dayton, NJ 08810  
Ph: 609-409-5409  
Fax: 609-409-2455  
888-865-6685 Toll Free