



GERICO FIBERGLASS PRODUCTS, INC.

5842 ARGOSY DRIVE, HUNTINGTON BEACH, CA 92649
(714) 898-4391 (800) 854-8873



Quamagra® TILE, INC.

11961 VOSE STREET, NORTH HOLLYWOOD, CA 91603

(213) 875-1690

LittleTileInc.com

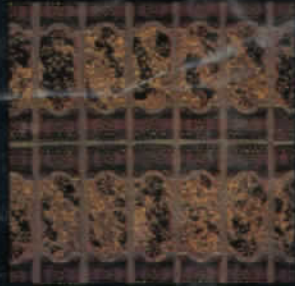
NEPTUNE

Mesh backed – frostproof porcelain – 12" x 13" sheets

Surface bullnose available



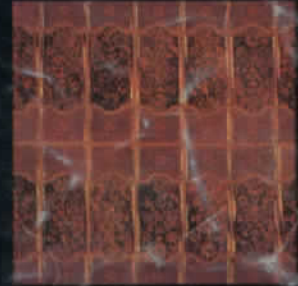
NEP-1



NEP-2



NEP-3



NEP-4

CONTINENTAL

Mesh backed – frostproof procelain – 12" x 12" sheets

Trim available



CO-102



CO-103



CO-104



CO-105



CO-106



CO-107



CO-108



CO-110



CO-111



CO-112



CO-113

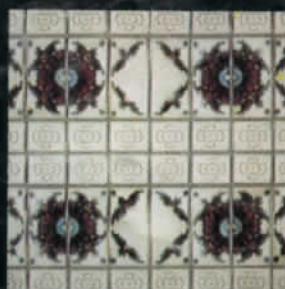


CO-114

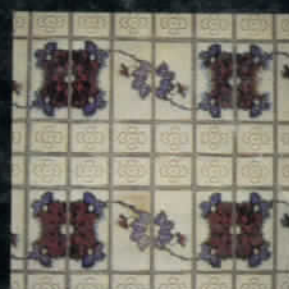
Shade variations may occur and enhance the overall characteristic of ceramic tile

BOUQUET

Mesh backed – frostproof procelain – 12" x 13½" sheets
Surface bullnose available



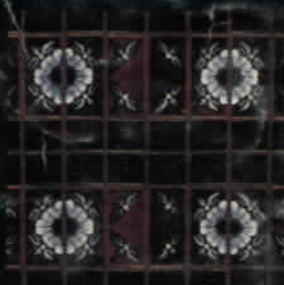
BOQ-3



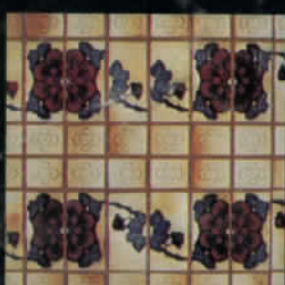
BOQ-4



BOQ-5



BOQ-6



BOQ-7



BOQ-8

FLOWER

Mesh backed – frostproof procelain – 12" x 12" sheets
Surface bullnose available in FL-4 and FL-12



FL-1



FL-2



FL-3



FL-4



FL-11



FL-12



FL-13

SEVILLE

Mesh-backed – frostproof procelain – 12" x 12" sheets



CASTILLE



DEL MAR



FLAMENCO



LA JOLLA



SANTA CRUZ

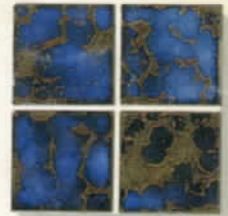


SANTA FE

CONTINENTAL

- *3'x3' frost proof, acid proof, stain resistant porcelain tiles.
- *12'x12' mesh backed mounted sheets.
- *Surface bullnose available.
- *6'x6' section illustrated.

New

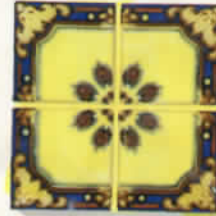


BLUE SATIN

SEVILLE

- *3'x3' frost proof, acid proof, stain resistant porcelain tiles.
- *12'x12' mesh backed mounted sheets.
- *6'x6' section illustrated.

New



CS-18



CS-537-C

FRESCA

- *6'x6' glazed, frost proof, acid proof, stain resistant porcelain tiles.
- *6'x6' section illustrated.

New



L-18



KP-120

SUPREME

- *3'x6' frost proof, acid proof, stain resistant porcelain tiles.
- *12'x12' mesh backed mounted sheets.
- *6'x12' section illustrated.

New



Q-118-B



Q-114



Q-100



36-1



36-5

DE 13'

TILE DISTRIBUTORS

2840 MIRALOMA AVE.

ANAHEIM, CA 92806

(714) 630-2216

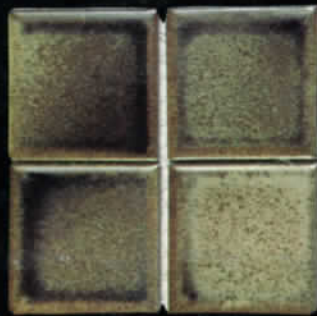
distributors, Inc.

CONTINENTAL COLLECTION

PORCELAIN, GLEAZED, 3/8" x 3/8" MOUNTING ARRAY OF 12 COORDINATIVE DECORATOR COLORS MOUNTED ON MESH BACKING (12"x12") FOR FAST INSTALLATIONS. FROST-PROOF.



CO-102



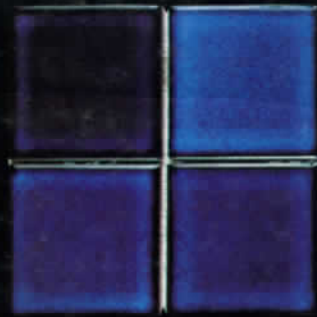
CO-103



CO-104



CO-105



CO-106



CO-107



CO-108



CO-110



CO-111



CO-112



CO-113



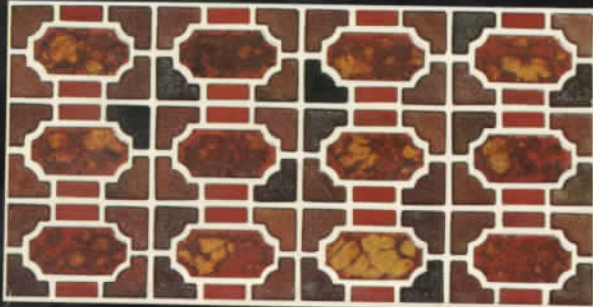
CO-114

FOR KITCHENS, COUNTER-TOPS, TUB ENCLOSURES, SHOWERS, ENTRIES, BUILDING EXTERIORS, SWIMMING POOLS/SPAS, AND ALL OTHER USES.

Exclusively distributed by Quamagra
 POOL AND SPA TILES
 12" x 12" Frostproof sheets
 Mesh backed porcelain.

COZAD & O'HARA CO.
 TILE DISTRIBUTORS
 2840 MIRALOMA AVE.
 ANAHEIM, CA 92806
 (714) 630-2216

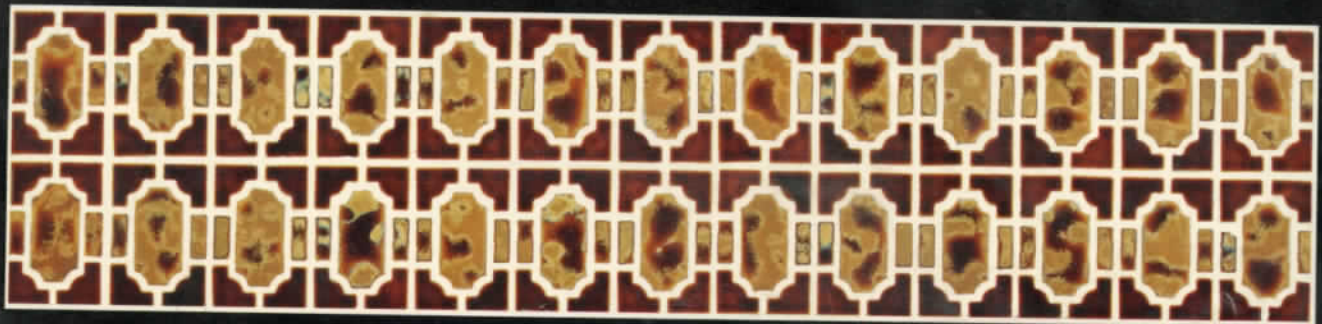
NC.
 California 91603



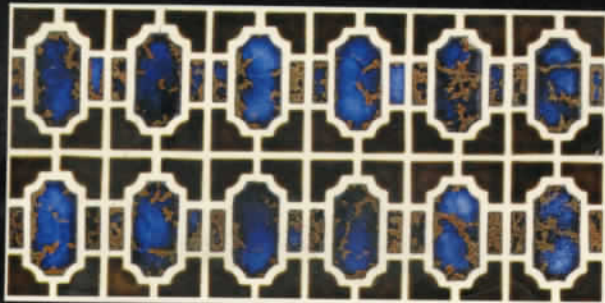
SJ-90



SJ-10



SJ-20



SJ-50



SJ-100

BRANCH LOCATIONS:

ANAHEIM, CALIFORNIA

Quality Marble and Tile Dist., Inc.
 1780 E. Pacifico Avenue
 Anaheim, California 92805
 (714) 634-2952

DALLAS, TEXAS

Quality Marble and Tile Dist., Inc.
 2829 Dairy Milk Lane
 Dallas, Texas 75229
 (214) 243-8700

DENVER, COLORADO

Quality Marble and Tile Dist., Inc.
 1390 W. Evans Avenue
 Denver, Colorado 80223
 (303) 922-8421

FORT WORTH, TEXAS

Quality Marble and Tile Dist., Inc.
 220 So. Sylvania Avenue
 Fort Worth, Texas 76111
 (817) 831-0709

FRESNO, CALIFORNIA

Quality Marble and Tile Dist., Inc.
 3111 N. Argyle Street
 Fresno, California 93727
 (209) 291-5531

LAS VEGAS, NEVADA

Quality Marble and Tile Dist., Inc.
 2900 South Highland Drive
 Las Vegas, Nevada 89109
 (702) 733-9119

NORTH HOLLYWOOD, CA.

Quality Marble and Tile Dist., Inc.
 11961 Vose Street
 North Hollywood, California 91603
 (213) 875-1690 983-1054

PALM SPRINGS, CALIFORNIA

Quality Marble and Tile Dist., Inc.
 36223 Plaza Drive
 Cathedral City, California 92234
 (714) 324-4561

PHOENIX, ARIZONA

Quality Marble and Tile Dist., Inc.
 2921 N. 30th Avenue
 Phoenix, Arizona 85017
 (602) 278-6206

SACRAMENTO, CALIFORNIA

Quality Marble and Tile Dist., Inc.
 6251-A 27th Street
 Sacramento, California 95822
 (916) 391-9360

SAN DIEGO, CALIFORNIA

Quality Marble and Tile Dist., Inc.
 5525 Ruffin Road
 San Diego, California 92123
 (714) 279-8161

SAN JOSE, CALIFORNIA

Quality Marble and Tile Dist., Inc.
 2051 O'Toole Avenue
 San Jose, California 95131
 (408) 946-7018

SAN LEANDRO, CALIFORNIA

Quality Marble and Tile Dist., Inc.
 14075 Catalina Street
 San Leandro, California 94577
 (415) 483-0910

SEATTLE, WASHINGTON

Quality Marble and Tile Dist., Inc.
 4343 So. 104th Place
 Seattle, Washington 98178
 (206) 723-4296

UPLAND, CALIFORNIA

Quality Marble and Tile Dist., Inc.
 1101 W. 9th Street
 Upland, California 91786
 (714) 985-9793

Also available at other selected distributors.

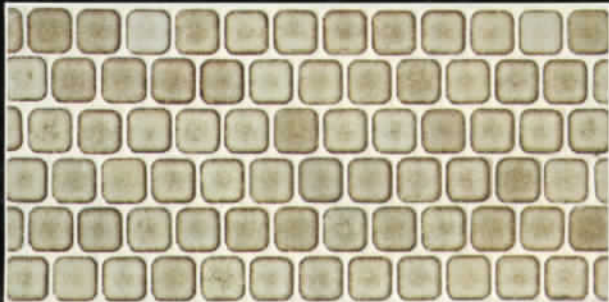
Shade variations may occur and enhance the overall characteristics of ceramic tile.

MADE IN JAPAN

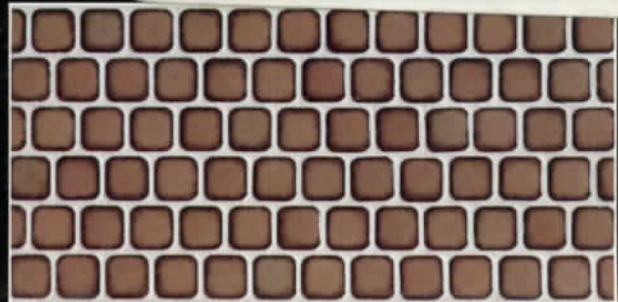
PETITE-Series

Exclusively distributed by Quamagra
POOL AND SPA TILES
 Mesh backed porcelain, 12"x12" Frostproof sheets

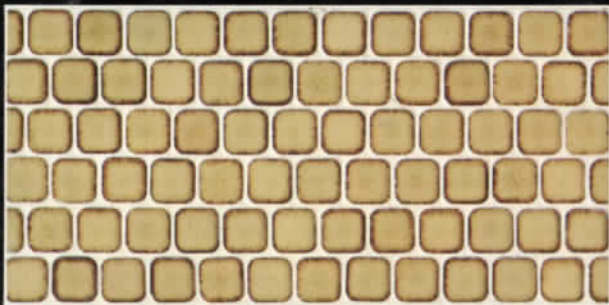
COZAD & O'HARA CO.
 TILE DISTRIBUTORS
 2840 MIRALOMA AVE.
 ANAHEIM, CA 92806
 (714) 630-2216



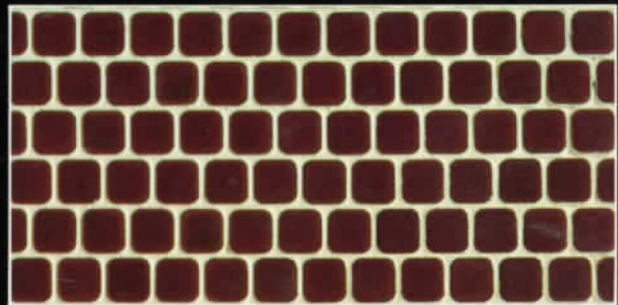
PT-1



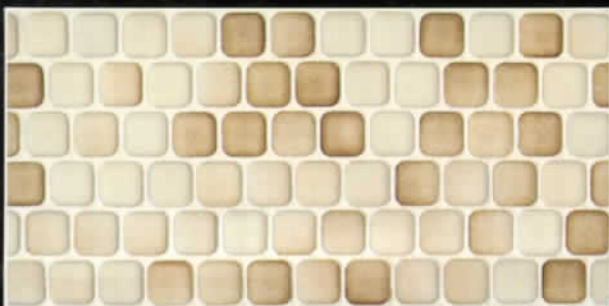
PT-4



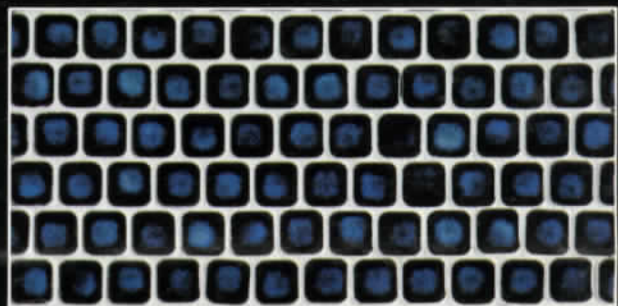
PT-2



PT-5



PT-3



PT-6

QUALITY MARBLE & TILE DISTRIBUTORS, INC.

11961 VOSE STREET, P. O. BOX 447
 NORTH HOLLYWOOD, CALIFORNIA 91603
 213 - 875 - 1690 213 - 983 - 1054
 CABLE ADDRESS: Quamagra Van Nuys: TELEX: 066-2448

BRANCH LOCATIONS

ANAHEIM

Quality Marble and Tile Dist., Inc.
 1790 E. Pacific Avenue
 Anaheim, Ca. 92805(714)634-2952

LAS VEGAS

2900 South Highland Drive,
 Las Vegas, Nevada 89109.

DALLAS, TEXAS

Quality Marble and Tile Dist., Inc.
 2829 Dairy Milk Lane.
 Dallas, Texas 75229(214)243-8700

DENVER, COLORADO

Quality Marble and Tile Dist., Inc.
 1390 W. Evans Avenue
 Denver, Colorado 80223(303)922-8421

FRESNO, CA.

Quality Marble and Tile Dist., Inc.
 3111 N. Argyle Street
 Fresno, Ca. 93727(209)291-5531

FORT WORTH, TEXAS

Quality Marble and Tile Dist., Inc.
 220 So. Sylvania Avenue
 Fort Worth, Texas 76111(817)831-0709

NORTH HOLLYWOOD, CA.

Quality Marble and Tile Dist., Inc.
 11961 Vose Street
 North Hollywood, Ca.
 91603(213)875-1690 983-1054

PALM SPRINGS, CA.

Quality Marble and Tile Dist., Inc.
 36223 Plaza Drive
 Cathedral City, Ca. 92234(714)324-4561

PHOENIX, ARIZONA

Quality Marble and Tile Dist., Inc.
 2921 N. 30th Avenue
 Phoenix, Arizona 85017(602)278-6206

SACRAMENTO, CA.

Quality Marble and Tile Dist., Inc.
 6251-A 27th Street
 Sacramento, Ca. 95822(916)391-9360

SAN DIEGO, CA.

Quality Marble and Tile Dist., Inc.
 5525 Ruffin Road
 San Diego, Ca. 92123(714)279-8161

SAN LEANDRO, CA.

Quality Marble and Tile Dist., Inc.
 14075 Catalina Street
 San Leandro, Ca. 94577(415)483-0910

SEATTLE, WN.

Quality Marble and Tile Dist., Inc.
 4343 So. 104th Place
 Seattle, Wn. 98178(206)723-4296

UPLAND, CA.

Quality Marble and Tile Dist., Inc.
 1101 W. 9th Street
 Upland, Ca. 91786(714)985-9793